



espireuk.com



Fire & CO Safety Experts

Installer Specification Brochure





Your safety, our priority.

Contents

| | |
|----|------------------------|
| 3 | Introducing Espire® |
| 5 | About Espire® |
| 13 | Training & support |
| 15 | Product features |
| 21 | Categories of system |
| 23 | Optical smoke alarms |
| 25 | Heat alarms |
| 27 | Smoke & heat alarms |
| 29 | Carbon monoxide alarms |
| 31 | CO & heat alarms |
| 33 | Accessories |
| 37 | Alarm selector |
| 39 | RF-Link |
| 39 | Interconnecting |
| 40 | Alarm modes |
| 42 | Product listing |



Welcome to Espire®

Reliable products & a trusted service

We take great pride in maintaining exceptional standards in our products. We are committed to harnessing the very latest technologies, & developing superior-performing products which allow installation projects to be completed quickly & easily.

A brand by ESP®

ESP's strong distribution network & commitment to excellence ensures that Espire®'s safety alarms are readily available to all customers, backed by exceptional customer service & support.

Part of Scolmore® Group

Supported by the esteemed Scolmore® Group, a renowned leader in electrical & lighting solutions, Espire® combines innovation, reliability & the backing of a trusted industry partner.



Scolmore
GROUP



Rest assured Scolmore Group's quality promise is behind everything we do.

A reliable choice for home safety.

To support contractors, our alarms are simple to install, saving you time.

Our outstanding product range is guaranteed to have precisely what you need for fire and carbon monoxide protection. With our wide selection of products, which boast an array of innovative and cutting edge features, you can be assured of the best possible solution for any home safety requirements.



Trusted tech, UK design.

All Espire® products undergo a meticulous design, development and manufacturing process at our dedicated factory.

To ensure compliance with all relevant product standards, rigorous testing is conducted at various stages of production. Resourced with an experienced team and comprehensive testing equipment, our factory has produced over four million units.



Highest quality alarms

To ensure the utmost reliability in life-saving detection, every individual alarm undergoes multiple tests. These tests include initial assembly, test & calibration stages, & a final comprehensive examination.

Product reliability & testing

Each Espire® alarm is accredited by a third-party to meet the relevant British or European standards.

ESP® adheres to ISO 9001:2015 - ISO 14001:2015, further emphasising our commitment to quality & operational excellence.

BS EN 14604 Smoke Alarms
BS 5446-2 Heat Alarms
BS EN 50291-1 CO Alarms

Tried & tested products.

Our alarms are of the highest quality and have all the relevant certifications - providing assurance that they will meet the required standards when installed in accordance with the manufacturer's instructions.

For additional peace of mind, The Espire® range of fire and CO safety products is certified by the Loss Prevention Certification Board and TÜV.



FIA Registered.

ESP® has been present in the UK fire and security market for over 25 years - with a dedicated customer service and technical support team on hand to provide the best in before and after sales support.

Committed to sustainability.

EcoVadis is the world's most trusted provider of business sustainability ratings. Scolmore rank in the top 35% of all companies rated by EcoVadis is the result of the company's consistent efforts and actions across the four key sustainability areas – Environment, Labour and Human Rights, Ethics and Sustainable Procurement.

Scan to learn more.



Our sustainability promise.

Sustainability drives all of our decisions and actions. We prioritise sustainability in all aspects of our business operations.



100% recyclable packaging.

Our eco-friendly, brown card packaging is fully recyclable making it 100% biodegradable.

We use significantly less ink and material, all helping to minimise our carbon footprint.



Scolmore® Group app.

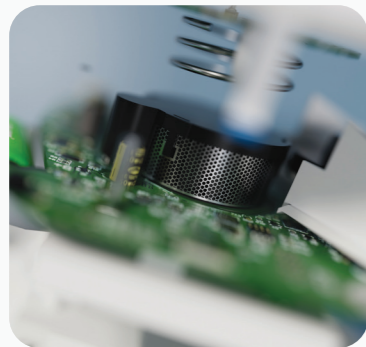
Use your smart phone to browse our complete range of products, add products to your Favourites or to the Quote Basket. The app then allows you to email the contents of the basket back to yourself providing all the information you need to obtain any quotations. You can use the search facility to easily locate the products required and if you require further information there's an option to email us or find us on the map straight from the app. As an added bonus the app is 100% native, which means you don't have to be connected to the Internet to use it.



espireuk.com

Espire® website.

Check out our website to view 'how to' videos, the alarm selection tool and utilise our comparison tables.



'How to' videos

Visit our website and YouTube channel to find a range of 'how to' videos - from alarm installation to pairing devices.



Alarm selector tool

Our website's handy product finder page allows easy comparison of models to find the perfect fit for your project.



Comparison tables

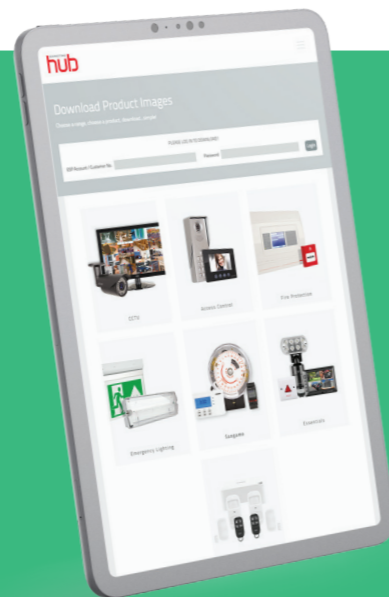
View our range of alarms in interactive tables which allow you to compare models.

Marketing Hub

espireuk.com/marketing-hub

The Marketing Hub area provides Espire® stockists with a range of tools to enhance their own marketing facilities, with very little effort or cost.

A number of templates featuring some of the most popular products are available to download & these can be customised with the stockist's own details to optimise sales opportunities.



espukonline.com

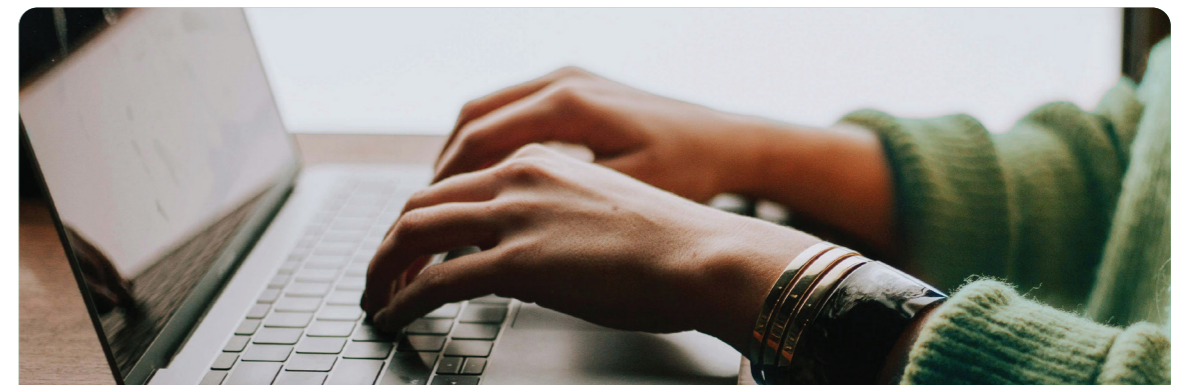
Online ordering.

Ordering 24 hours a day, 7 days a week with the ability to check current stock levels as required, meaning you are not restricted to ordering during normal office hours.

- Access to online catalogues will keep you fully updated with the complete product range & provide information on new products as & when they become available.
- The order tracking service keeps you up to date with the progress of your shipment.
- Managing your administration paper work is now even easier with instant access to reports & essential documents at the click of a button.
- A 'quick buy tab' & the ability to store the most common orders for repeated use, adds to the versatility & flexibility of the revised system.

PDF Upload Feature

Eliminate the need for time consuming manual data entry. Simply upload your purchase order PDF & we will extract the information for you so you can add the products straight to your basket within seconds.



E-mail us at sales@espuk.com or call our sales office on 01527 515 150 & one of our sales representatives will be happy to get you online.

Training & support.

We're here to provide you with complete technical support across the country.

This includes:

- helping you choose the right alarm
- providing guidance on installation locations in accordance with British Standards, Building Regulations and local government recommendations.
- guiding you through installation steps
- giving you tips for maintenance.

We can assist you with detailing specification documents as well provide support when it comes to design layouts and product selectivity.



CIBSE Member

Maintaining a competitive edge is vital to stay ahead in the fast moving professional electrical industry. Scolmore® Group has a wealth of CPD accredited training modules available to keep you up to date with the latest regulations, technologies, and product innovations.



Inspired home safety.

Training days

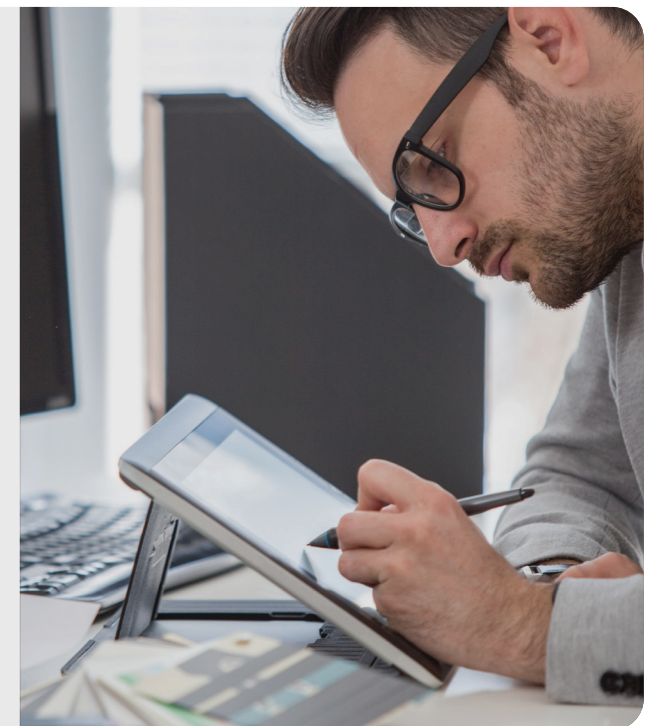
We offer a free training & advice facility to ensure our customers get the very best from our products. Our product overview training days are aimed at electrical contractors and wholesalers who would like to add fire equipment to their portfolio. You will gain an understanding of all our products and their benefits. We will also discuss how they can be implemented within different on-site applications.

Gold star service

Our dedicated Research & Development Department at ESP® remains at the forefront of innovation, consistently working on new products & applications. With pending patents for life-saving alarm detection technologies, Espire® takes pride in introducing groundbreaking advancements that enhance protection & simplify maintenance. These include 10 Year Lithium cell batteries, wireless radio frequency interconnection & multi-sensor fire alarms.

Design service

Contractors can access a free of charge design facility that covers all our life safety systems. We provide expertise in choosing the right products & solutions to create a scheme that meets the requirements of the project, ensuring compliance with all the relevant regulations & standards. This service is available to any size of business, from local electricians to national contracting companies.



Each product has a comprehensive manual available for your information, however please feel free to contact our technical team on 01527 515 150 should you require any further assistance.

Innovation at your fingertips.

Espire® alarms are quick & easy to install, saving you time. Our outstanding product range is guaranteed to have precisely what you need for fire & carbon monoxide protection.

RF-Link



Optional **ES1RF**

To add additional life safety protection and installation flexibility, compatible Espire® alarms can be installed with the RF-Link module. The RF-Link function enables alarms to wirelessly connect to create a system that will sound together if one alarm is activated, thus increasing protection.

Stainless steel insect repellent mesh

Reduces false alarms by protecting the smoke chamber from insects & debris.

Ultra responsive smoke chamber

Our intelligent system makes smoke detection quicker, keeping you safe & helping to save lives.

Our family of safety alarms are packed full of features.

Consistent aesthetic

Espire® alarms have a similar appearance, keeping consistency throughout your job.

A complete range

Espire® offers a comprehensive range of fire safety products, which enables you to complete the project no matter how big or small.



10 year lithium battery

An end of life sequence is performed by the alarm after the 10th year of installation indicating that the alarm needs to be replaced. The alarm will produce a sequence of LED flashes & sounder chirps to indicate the sequence.



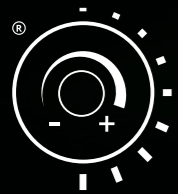
Interconnectivity between alarms

To add additional life safety protection, the alarms with the interconnect function can be wired together to create a system that triggers all sounders if one alarm is activated.



Easy to install

Lock-in wiring base - a secure & fixed point of installation for the alarm head to slide onto. Once the alarm head is installed onto the lock-in wiring base a lever engages to provide tamper protection.

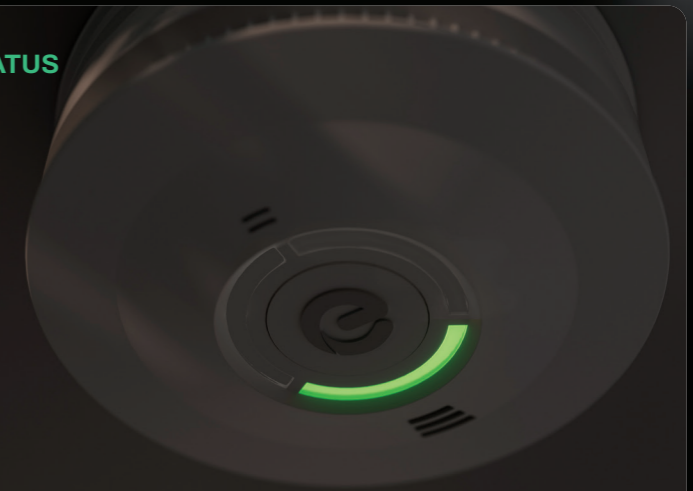


Auto dim LED status light.

With mains powered alarms, when the power LED is required to remain on, the LED will automatically dim during low light levels to reduce distraction and not disturb sleep.

PATENT PENDING

POWER STATUS Green LED



Permanently on for mains powered alarms.

FAULT STATUS Amber LED



- Battery fault
- Sensor fault
- Smoke chamber contamination
- Alarm end of life reached
- Hushed fault.

FIRE STATUS Red LED



- Activated alarm
- Activation stored in memory
- Hush function activated
- Auto test check.

Categories of system.

A fire risk assessment is used to determine the grade and category of system required.

Alarm locations shown here follow guidance provided in British Standard; BS 5839-6.



LD1

Optimum protection

Appropriate where occupants are likely to be vulnerable. In addition to LD2 recommendations, alarms are installed in all circulation areas, and all rooms or areas in which a fire might start. Excludes toilets, bathrooms or shower rooms.



LD2

Basic protection

In addition to the LD3 recommendations, alarms are installed in certain rooms determined by the risk assessment, e.g. a heat alarm is installed in each kitchen, or a smoke alarm installed in the principal habitable room. Excludes toilets, bathrooms or shower rooms.



LD3

Minimum protection

Alarms installed in all hallways, stairways and circulation areas that form part of the escape routes. All alarms are to be interconnected.

Alarm locations shown here follow guidance provided in Irish Standard 3218.

LD1

Optimum protection

Interconnected self-contained mains powered/battery backed smoke/heat alarms shall be suitably located throughout the dwelling, including all circulation areas that form part of the escape route, and all rooms and areas (including attics/lofts/other spaces) in which a fire might start, other than toilets, bathrooms and shower rooms.

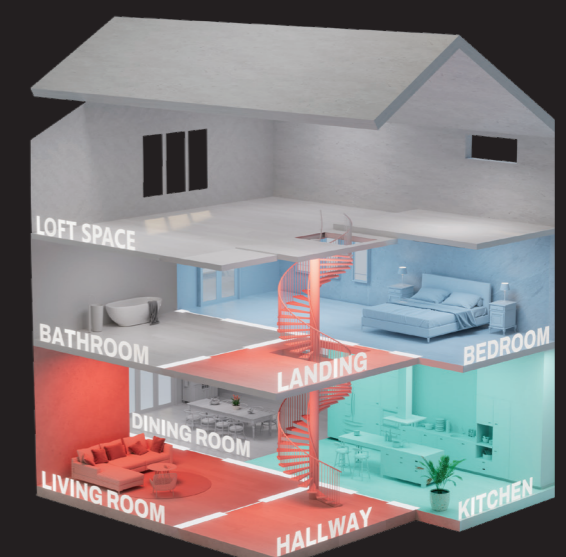


Alarm locations shown here follow guidance provided in Irish Standard 3218.

LD2

Basic protection

Interconnected self-contained mains powered/battery backed smoke/heat alarms shall be suitably located in all circulation areas that form part of the escape route within the dwelling, all high fire risk areas/rooms e.g. kitchens, living rooms, garages, utility rooms, and all bedrooms.



Optical smoke alarms

Compact design

with lock-in base

Auto sensor test

alarm self-checks sensor

Memory function

device has a 24 hour memory

Hush function

silences alarm activation for 10 minutes



Bedrooms



Stairways



Living Areas



Escape Routes



Optical sensors employ an infrared beam to detect the presence of smoke, effectively responding to slow, smouldering fires such as those caused by electrical faults.

ES1SLV

Powered by mains with a sealed 10 year lithium battery

Suitable for Grade D1 installations



RF-Link (Optional)



Hard Wired Interconnection



Mains Powered



10 Year Sealed Battery

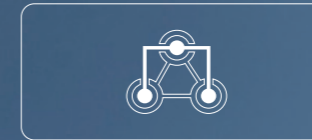


Auto-Dimming Power LED

ES1SRV

Powered by mains with a replaceable 9V battery

Suitable for Grade D2 installations



Hard Wired Interconnection



Mains Powered



Replaceable 9V Battery



Auto-Dimming Power LED

ES1SL

Powered by a sealed 10 year lithium battery

Suitable for Grade F1 installations



RF-Link (Optional)



Battery Powered



10 Year Sealed Battery

Find out more:



Standards: EN 14604



Heat alarms

Compact design
with lock-in base

Auto sensor test
alarm self-checks sensor

Memory function
device has a 24 hour memory

Hush function
silences alarm activation for 10 minutes



Kitchens



Garages



Find out more:



These alarms utilise a thermistor, which acts as a heat sensor, capable of detecting temperature fluctuations. The alarm is activated when the temperature reaches 58°C.

ES1HLV

Powered by mains with a sealed 10 year lithium battery

Suitable for Grade D1 installations



RF-Link
(Optional)



Hard Wired
Interconnection



Mains Powered



10 Year Sealed
Battery



Auto-Dimming
Power LED

ES1HRV

Powered by mains with a replaceable 9V battery

Suitable for Grade D2 installations



Hard Wired
Interconnection



Mains Powered



Replaceable
9V Battery



Auto-Dimming
Power LED

ES1HL

Powered by a sealed 10 year lithium battery

Suitable for Grade F1 installations



RF-Link
(Optional)



Battery
Powered



10 Year Sealed
Battery

Standards: BS 5446-2









Smoke & heat alarms

Compact design
with lock-in base

Auto sensor test
alarm self-checks sensor

Memory function
device has a 24 hour memory






Hush function
silences alarm activation for 10 minutes

| | |
|---|--|
|  Bedrooms |  Garages |
|  Stairways |  Lofts |
|  Living Areas |  Escape Routes |






Equipped with optical & heat sensors, the alarms on this page are capable of detecting both smoke & heat, enabling them to respond to a broad range of fires, from fast flaming to slow smouldering incidents.

ES1MULV Powered by mains with a sealed 10 year lithium battery
Suitable for Grade D1 installations

| | | | | |
|---|---|--|---|---|
|  RF-Link (Optional) |  Hard Wired Interconnection |  Mains Powered |  10 Year Sealed Battery |  Auto-Dimming Power LED |
|---|---|--|---|---|

ES1MUL Powered by a sealed 10 year lithium battery
Suitable for Grade F1 installations

| | | |
|---|--|---|
|  RF-Link (Optional) |  Battery Powered |  10 Year Sealed Battery |
|---|--|---|

Find out more:



Standards: EN 14604 | BS 5446-2



Carbon monoxide alarms

Compact design
with lock-in base

Auto sensor test
alarm self-checks sensor

Memory function
device has a 24 hour memory

Hush function
silences alarm activation for 10 minutes



Fuel
Burning
Areas



Kitchens



Carbon Monoxide (CO) is an invisible, odourless, & tasteless gas that poses a lethal threat.

Our CO alarms identify the presence of Carbon Monoxide gas emitted by the combustion of carbon-based fuels such as gas, wood, oil, & coal. Perfectly suited for fuel burning areas & kitchens where the risk of CO pollution is greater. Espire® CO alarms provide an early visual alert of rising concentration levels of carbon monoxide prior to full alarm activation for extra safety.

ES1CLV

Powered by mains with a sealed 10 year lithium battery

Suitable for Grade D1 installations



RF-Link
(Optional)



Hard Wired
Interconnection



Mains Powered



10 Year Sealed
Battery



Auto-Dimming
Power LED

ES1CL

Powered by a sealed 10 year lithium battery

Suitable for Grade F1 installations



RF-Link
(Optional)



Battery
Powered



10 Year Sealed
Battery

Find out more:



Standards:EN50291-1



CO & heat alarms

Compact design
with lock-in base

Auto sensor test
alarm self-checks sensor

Memory function
device has a 24 hour memory

Hush function
silences alarm activation for 10 minutes



Fuel
Burning
Areas



Kitchens



For kitchens equipped with fuel burning appliances like gas boilers or cookers, it is highly recommended to use multi-sensor Carbon Monoxide & Heat alarms. Espire® CO alarms provide an early visual alert of rising concentration levels of carbon monoxide prior to full alarm activation for extra safety.

ES1CHLV

Powered by mains with a sealed 10 year lithium battery

Suitable for Grade D1 installations



RF-Link
(Optional)



Hard Wired
Interconnection



Mains Powered



10 Year Sealed
Battery



Auto-Dimming
Power LED

ES1CHL

Powered by a sealed 10 year lithium battery

Suitable for Grade F1 installations



RF-Link
(Optional)



Battery
Powered



10 Year Sealed
Battery

Find out more:



Standards: EN 50291-1 | BS 5446-2



Accessories

Alarm multi tool

ES1MTW - White
ES1MTB - Black

Pairing & lock-in base release tool (2 pack)



Alarm masking plate

ES1MP
Flame retardant Espire® alarm masking plate



Find out more:



Sounder strobe



ES1ST

Powered by mains supply

Red IP65 strobe with selectable sounder

Alarm RF module



ES1RF

For mains powered alarms with lithium battery backup

Compatible with ES1SLV, ES1HLV, ES1MULV, ES1CLV, ES1CHLV



ES1RF2

For lithium battery powered alarms

Compatible with ES1SL, ES1HL, ES1MUL, ES1CHL, ES1CL

Remote control switch



ES1REM

RF remote control switch powered by a 10 year lithium battery

Compatible with RF-Link enabled Espire® alarms



ES1REMV

Hardwired remote control switch powered by mains supply

Compatible with hardwired interconnected Espire® alarms

Relay base



ES1RBRF

Powered by mains supply with backup battery

Compatible with RF-Link enabled Espire® alarms



ES1RB

Powered by mains supply with backup battery

Compatible with hardwired interconnected Espire® alarms



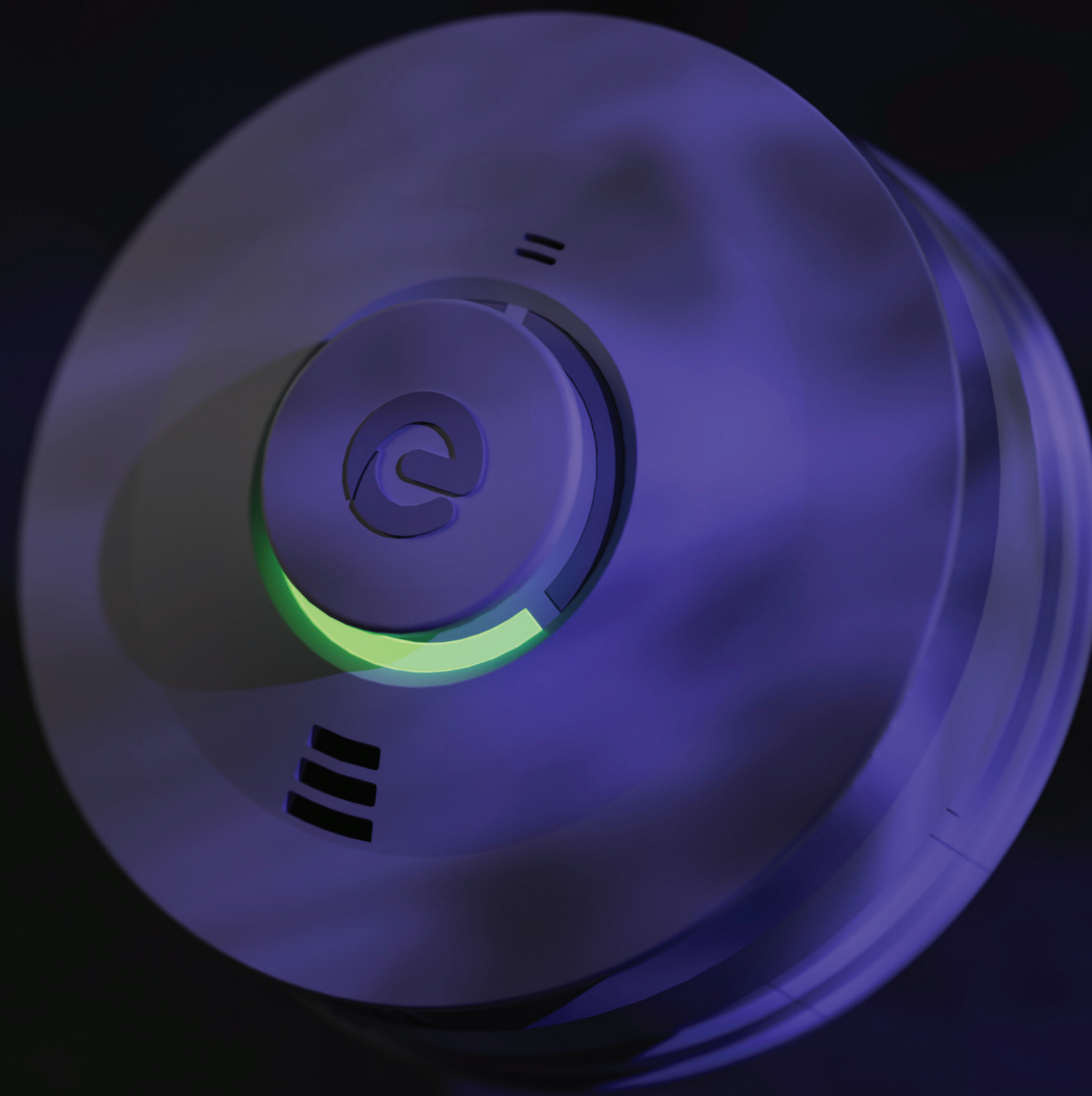
ES1MODV

Input relay base powered by mains supply with backup battery

Compatible with hardwired interconnected Espire® alarms



Reliable safety solutions

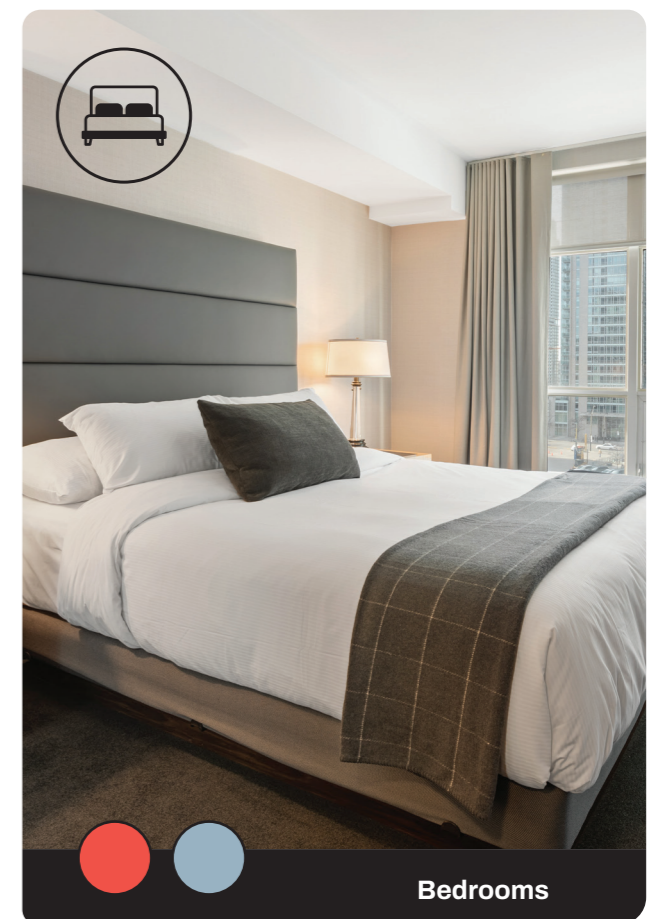
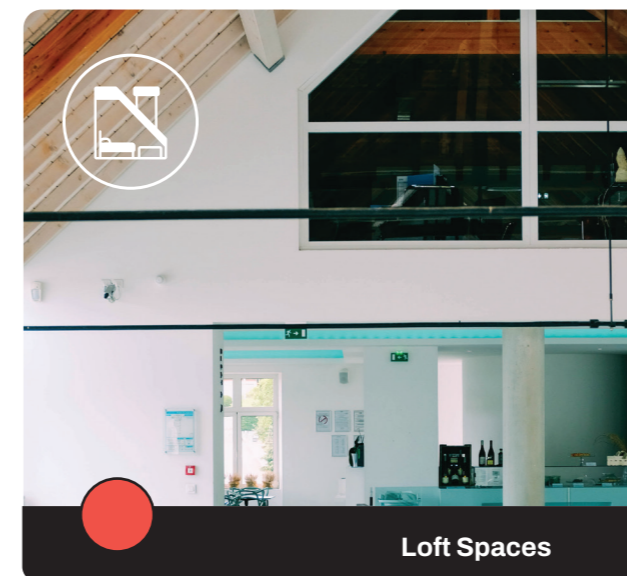
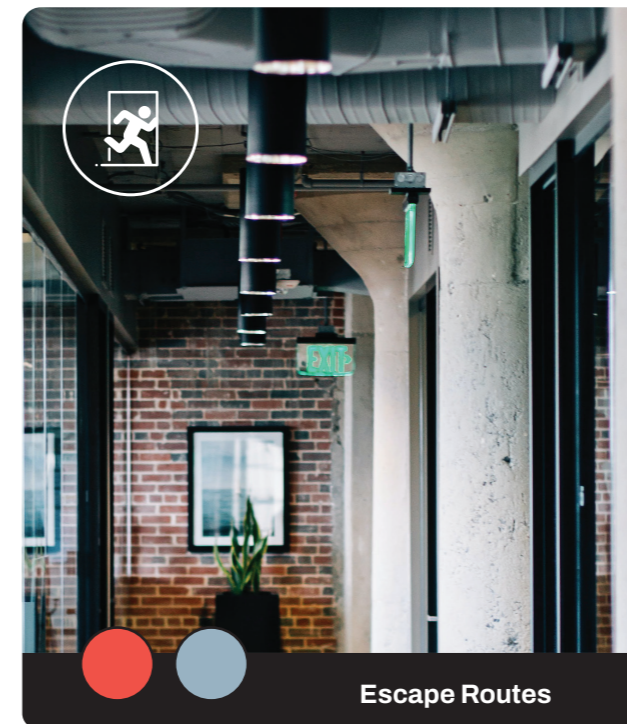
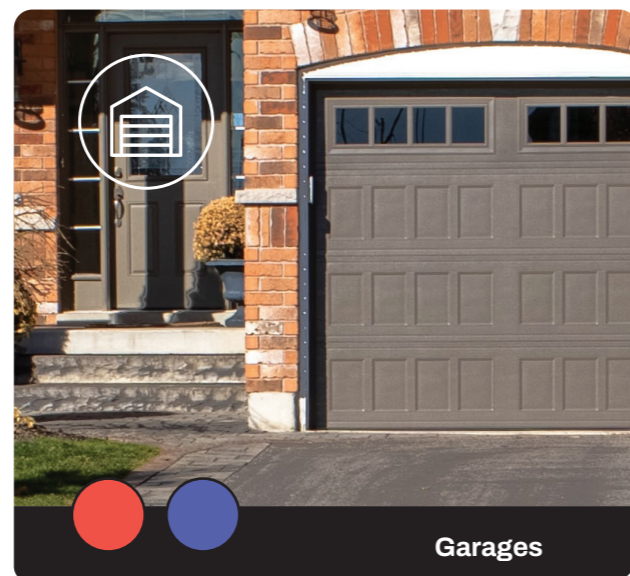


Auto dim LED status light

Alarm selector

These pages provide a handy visual guide to help you select the appropriate alarm for each location in the home.

-  Optical Smoke
-  Heat
-  Smoke & Heat
-  CO
-  CO & Heat





RF-Link

Up to 28 alarms can be interconnected wirelessly via the RF-Link function.

RF-Link versions are available within each Espire® range of alarms.



Interconnecting

A simple, convenient means of interconnecting Grade D alarm system, interconnecting can be achieved through RF or hardwire.

Heat alarms should always be interconnected to a smoke or multi sensor alarm to ensure early warning.

If the mains supply is disconnected to an Espire® mains powered alarm, the lithium backup battery is designed to last up to a minimum of 3 years in standby mode and up to 2 years with the RF-Link module fitted.

Alarm modes

Normal mode (mains powered only)

A steady green LED means that the power supply to the alarm is normal.

Contamination mode

The amber LED flashes 4 times to indicate the alarm's optical smoke chamber is contaminated.

Fault mode

The amber LED flashes along with the alarm sounding in a sequence to indicate an alarm fault.

Alarm activation mode

The red LED flashes and alarm sounds indicating the alarm has been activated.

Fault hush mode

The amber flashes in a sequence without the alarm sounding to indicate the alarm has a fault.

Hush mode

The red LED flashes every 8 seconds, indicating hush mode - sensor remains in activated state.

Memory mode

The red LED flashes in a sequence indicating the alarm has stored a specific activation in the memory.



Product listing

| Page | SKU | Description |
|------|----------------|--|
| 33 | ES1CHL | Carbon Monoxide & Heat Multi Sensor Alarm powered by a sealed 10 year lithium battery |
| 33 | ES1CHLV | Carbon Monoxide & Heat Multi Sensor Alarm powered by mains with a sealed 10 year lithium battery |
| 31 | ES1CL | Carbon Monoxide Alarm powered by a sealed 10 year lithium battery |
| 31 | ES1CLV | Carbon Monoxide Alarm powered by mains with a sealed 10 year lithium battery |
| 27 | ES1HL | Heat Alarm powered by a sealed 10 year lithium battery |
| 27 | ES1HLV | Heat Alarm powered by mains with a sealed 10 year lithium battery |
| 27 | ES1HRV | Heat Alarm powered by mains with a replaceable 9V battery |
| 35 | ES1MODV | Input relay Base powered by mains supply with backup battery |
| 34 | ES1MP | Alarm Masking Plate |
| 34 | ES1MTB | Black Multi Tool (2 pack) |
| 34 | ES1MTW | White Multi Tool (2 pack) |
| 29 | ES1MUL | Smoke & Heat Multi-Sensor Alarm powered by a sealed 10 year lithium battery |
| 29 | ES1MULV | Smoke & Heat Multi-Sensor Alarm powered by mains with a sealed 10 year lithium battery |
| 35 | ES1RB | Relay Base powered by mains supply with backup battery |
| 35 | ES1RBRF | Relay Base powered by mains supply with backup battery |
| 35 | ES1REM | RF Remote Control Switch powered by a 10 year lithium battery |
| 35 | ES1REMV | Hardwired Remote Control Switch powered by mains supply |
| 35 | ES1RF | Alarm RF Module for mains powered alarms with lithium battery backup |
| 35 | ES1RF2 | Alarm RF Module for lithium battery powered alarms |
| 25 | ES1SL | Optical Smoke Alarm powered by a sealed 10 year lithium battery |
| 25 | ES1SLV | Optical Smoke Alarm powered by mains with a sealed 10 year lithium battery |
| 25 | ES1SRV | Optical Smoke Alarm powered by mains with a replaceable 9V battery |
| 35 | ES1ST | Sounder Strobe powered by mains supply |



**your safety,
our priority.**

ESP

Unit 7, Target Park,
Shawbank Road, Lakeside,
Redditch B98 8YN
Tel: +44 (0) 1527 51 51 50
Fax: +44 (0) 1527 51 51 43

sales@espuk.com
espuk.com

ESP Ireland

Unit 1B, Three Rock Road,
Sandyford Industrial Estate,
Dublin, Ireland
Tel: +353 (1) 5577 290
Fax: +353 (1) 2811 224

sales@espi.ie
espi.ie

