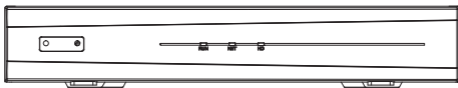


# Network Video Recorders Quick Guide



The latest product manuals and software is available online:  
[https://www.espuk.com/technical\\_support/](https://www.espuk.com/technical_support/)



**ESP**  
● ● ● ● ● ScolmoreGROUP

[www.espuk.com](http://www.espuk.com)

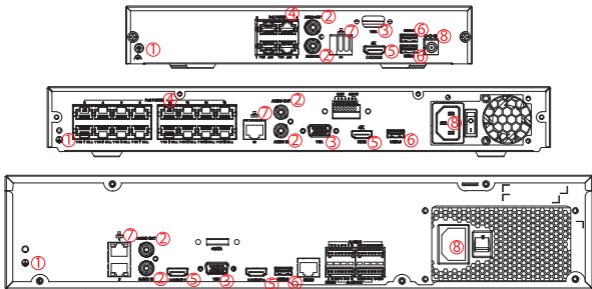
The full manual provides the latest and complete guide to the product. The Quick Start guide, alongside the NVR's start-up Wizard is designed for quick setup for most common features.

## Indicators

LED	Status	Description
PWR(Power)	Steady on	Connected to power.
RUN(Operation)	Steady on	Normal.
	Blinking	Starting up.
IR	Steady on	Activated for remote control.
	Blinking	Authenticating device code.
ALM(Alarm)	Steady on	Device alarm occurred.
NET(Network)	Steady on	Connected to network.
GUARD(Arming)	Steady on	Arming is enabled.
CLOUD	Steady on	Connected to cloud.
HD(Hard disk)	Steady on	No disk; or disk is abnormal.
	Blinking	Reading or writing data.
HDn(Hard disk)	Steady green	Normal.
	Blinking green	Reading or writing data.
	Steady red	Abnormal.
	Blinking red	Rebuilding array.

## Interfaces

NVR interfaces example.

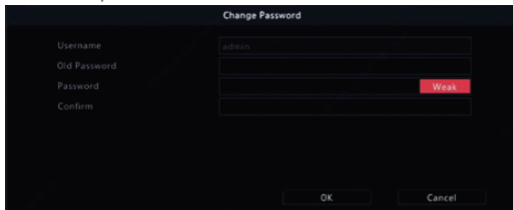


Interface	Description	Interface	Description
1	Grounding	2	Audio in/out
3	VGA output	4	PoE ports
5	HDMI output	6	USB
7	Network	8	Power

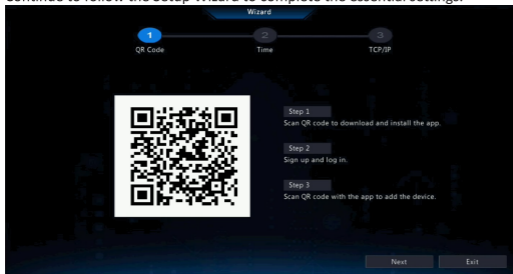
## Introduction

A connection to the monitor is required for the NVR to complete the general setup. Apply power to the system using the supplied Power Supply Unit, and then once prompted use the default password of 123456.

Follow the system prompts to reset the password and to assign an email address in the event that the password is lost.



Continue to follow the Setup Wizard to complete the essential settings.



## Adding Cameras to the NVR

Please note to remotely view the system the NVR requires a connection to a network VIA a LAN cable.

DHCP is enabled by default, as long as the ethernet is connected to a compatible network, the network details should be automatically set.

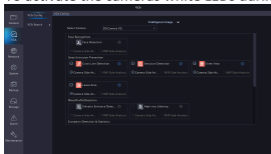
If the network does not support DHCP, then the network details will need to be manually applied by a competent person(s).

Compatible cameras that are plugged directly into the NVR should display automatically. For cameras that are connected VIA a network or require additional configuration, please refer to the full product manuals of the specific manuals of the specific NVR & Camera.

## Additional Settings for Cameras with LED Light function

During low light levels such as night-time, the cameras default setting is to automatically select Infrared mode to product a mono image.

To activate the cameras white LEDs during low light levels, each camera needs configuring;

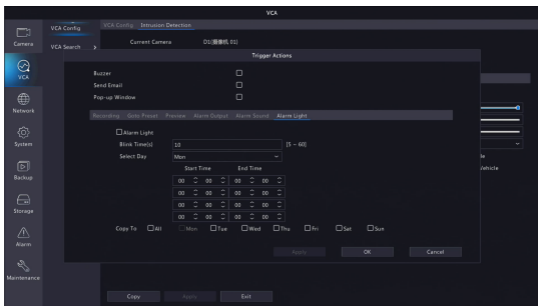


This is done by going into the Menu > VCA > Select the camera > Tick the box for either Cross Line Detection or Intrusion Detection > Click on the gear button of that setting.

Click on the rule(s) and draw your line(s).

The trigger action then needs defining;

Simply tick the "Alarm Light" tick box to enable the setting.



After successfully configuring the camera(s), when the activation area is triggered under low light conditions, the white LEDs will be activated for up to 60 seconds.

## Health & Safety

This unit must be installed by a suitably qualified person. Please ensure that all installations comply with the current IEE regulations. For reasons of space and clarity not every system has been included and the diagrams have been simplified. The product is not user servicable. Do not dismantle the product.

## Disclaimer

As with all software and hardware dependant devices, ESP are unable to guarantee that every device will be compatible with the supplied product and software. Specific models of phones, tablets, or other devices, the hardware it contains, the service provider, the types of data services offered and variations in version numbers can affect the performance.

Due to our policy of continuous product improvement and development, the specifications in this guide may be subject to change without prior notice.



● ● ● ● ● ScolmoreGROUP

Elite Security Products UK, Unit 7 Target Park, Shawbank Road, Lakeside, Redditch, Worcestershire, B98 8YN  
Tel +44(0)1527 515 150, Fax +44(0)1527 150 143, Email [info@espuk.com](mailto:info@espuk.com)  
Registered in England Number Company Registration No: 02769382, VAT Registration GB614686525

For more product information please visit [www.espuk.com](http://www.espuk.com)  
E&OE - Errors and omissions excepted.C22

