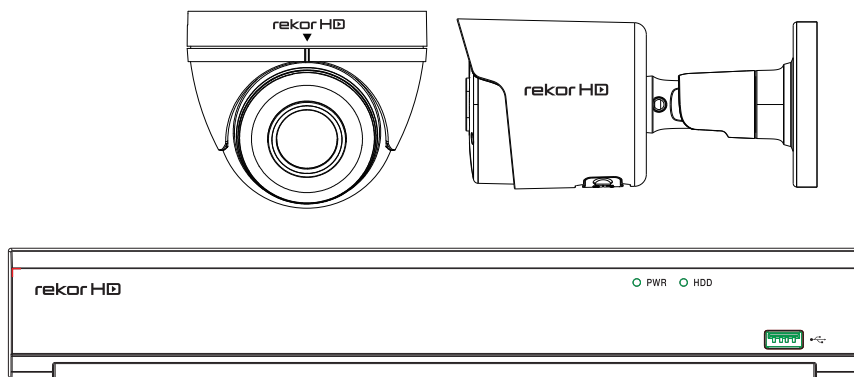


DVR Quick Start Guide

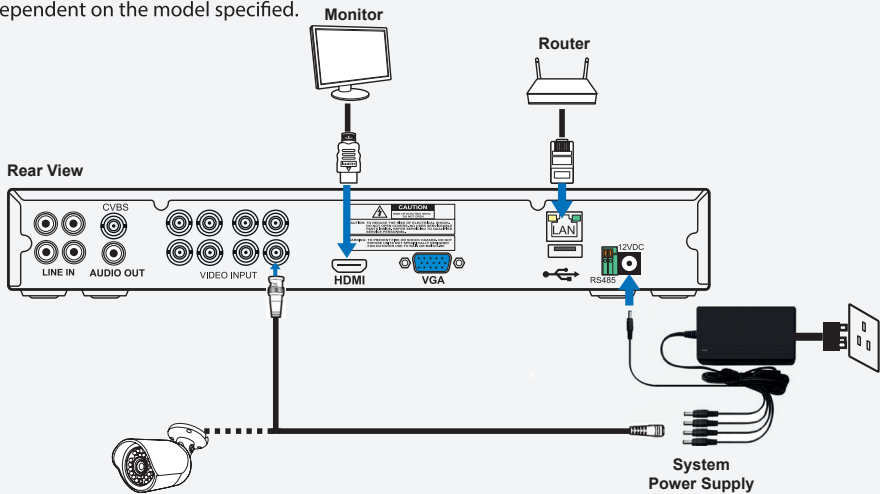


The latest product manual and software is available online:
https://www.espuk.com/technical_support/



Connection Diagram

Please Note: The below diagram covers the complete ESP range, there may be slight differences dependent on the model specified.



LINE IN - Audio Input

AUDIO OUT - Audio Output

CVBS - Monitor Spot Output

VIDEO INPUT - Camera Video Signal

HDMI - Monitor Output

VGA - Monitor Output

•  - USB Port for USB Drive and Mouse Connection

LAN - Network Connection

12VDC - Power Input Socket (Use only the PSU supplied)

Please Note: A connection to a monitor is required for the DVR to complete the general setup.

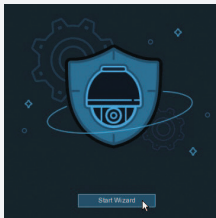
System Password

It is a requirement to set a password immediately in order to protect the system and privacy.

The password needs to be unique to this device and not used for any other account or online device.

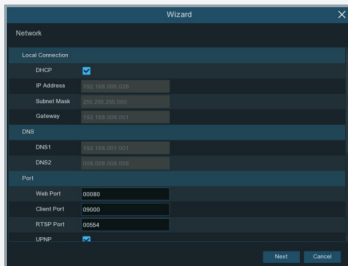
Use a complicated password and change regularly, this advice extends to all online devices and accounts.

Startup Wizard



When power is applied to the DVR the Startup Wizard takes the user through the general setup.

Network Connection

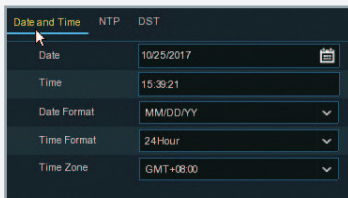


To remotely view the system the DVR requires a connection to a network.

If the network allows and has DHCP enabled, then the network details will automatically be assigned if the LAN cable is connected from the router to the DVR.

If the network does not allow DHCP, then the network details will need to be applied manually by competent persons.

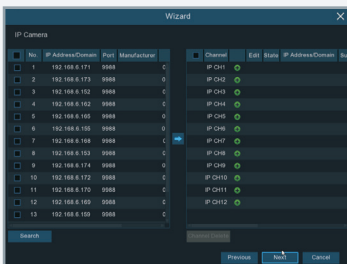
Date and Time Setting



It is important to set the time and date in order to review recorded data.

If the DVR is networked an NTP (Network Time Protocol) address can be entered to insure consistently high degrees of accuracy.

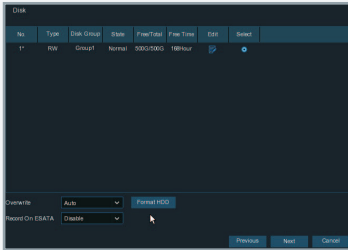
IP Cameras



The DVR is supplied with analog cameras which will be automatically recognised by the system when the video and power feed are connected.

If there are compatible IP cameras recognized on the same network they will appear here to be added.

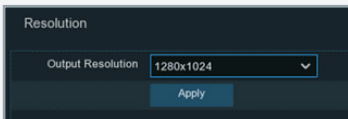
Disk



The Disk menu displays information from the installed Hard Drive Disk.

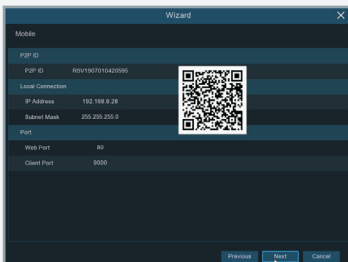
On first use the HDD will need to be formatted.

Resolution



To benefit from the best display picture quality, the resolution of the HDMI output can be adjusted to suit the system monitor's highest resolution.

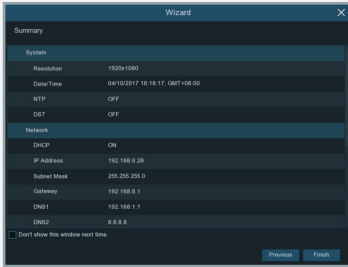
Mobile : APP Connectivity



Once the DVR has been networked, the system is remotely accessible via APP.

From APP store (IOS/play) download the ESP View APP. The user scans the QR code to add the unique ID of the DVR in the setup.

Summary



The last menu of the Wizard start-up feature.

Review settings before selecting 'Finish'.

Live Screen Overview

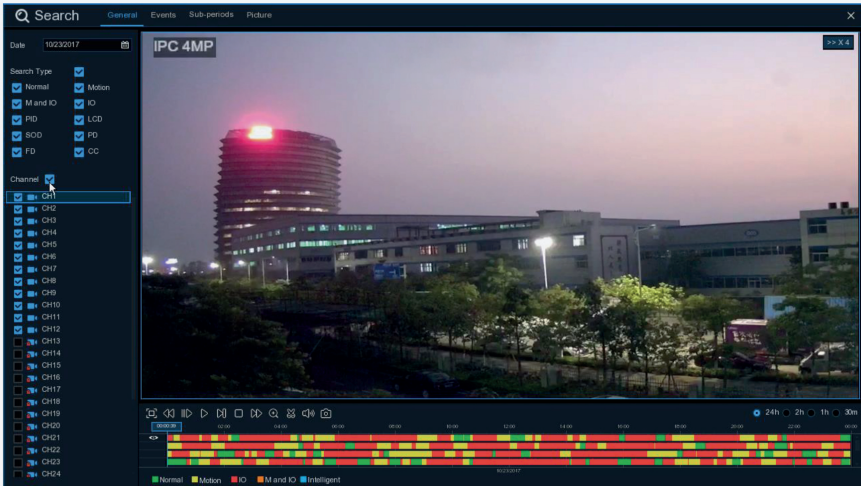
The screenshot shows a multi-camera live view interface. The top bar contains 'Camera Title' and 'Status Icons'. The main area is a grid of camera feeds. A 'Camera Quick Toolbar' is overlaid on the A-CH5 feed. A 'Start Menu' is visible on the left side. The bottom bar contains a 'Task Menu Bar' and 'System Date & Time'.


Task Menu Bar

- This indicates that the NVR is currently recording.
- This icon appears when the camera has detected motion.
- The icon indicates that the external I/O alarm device is triggered
- This icon indicates that the HDD is in error to work
- This icon indicates the HDD is unformatted
- This icon indicates the HDD is full.
- This icon indicates the HDD is read-only.

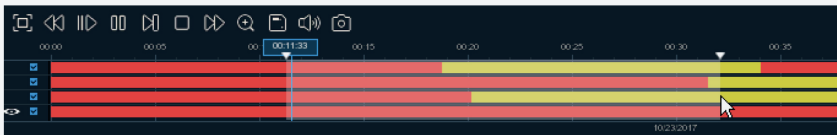
Search and Play Recordings


This menu gives an option to search & play recording for a selected date.






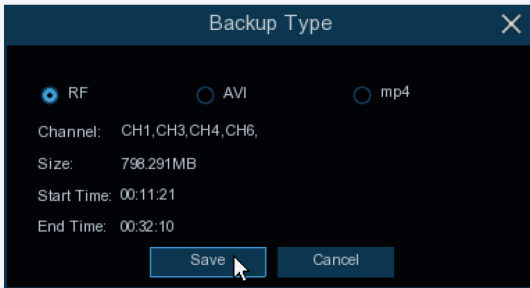
1. Select a date to search for video recording from the calendar.
2. Choose a search type.
3. Check channels you would like to search, or check **Channel** to search all connected channels.
4. The search result will display on the timeline from 00:00 to 24:00.
5. Click **▶** button to start playback.
6. Control the playback with buttons on **Video Playback Controls**.
7. Use the timeframe options (24h 2h 1h 30m) to view a smaller or larger time period.
8. If you want to quickly save a section of video during playing back to a USB flash drive, use the  **Video Clip** backup function.

Backup Function

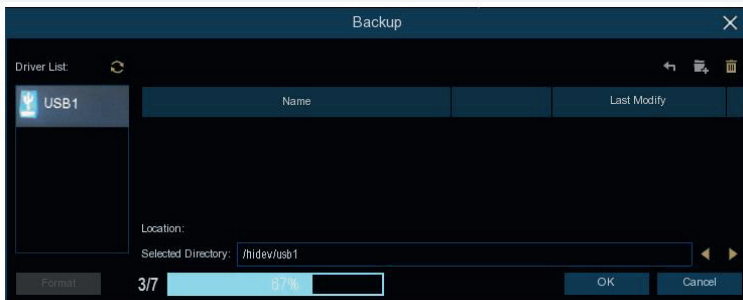


1. Insert your USB flash drive to the NVR.
2. Start a video recording playback.
3. Click  icon.
4. Check the channel(s) you want to make a video clip backup.
5. Move the mouse cursor to the timeline where you want to start the video clip.

6. Press and hold the left button of your mouse, and drag the cursor to the timeline where you want to end the video clip.
7. The  icon has been changed to  icon, click  to save the video clip.
8. Select a file type for your backup files, click **Save** button to save the video clips. Please make sure your USB driver has enough space to save the video clips.



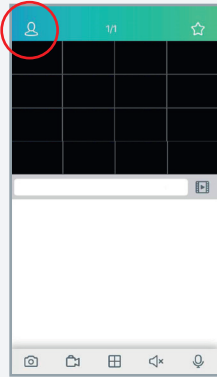
9. The backup drive menu appears. Navigate to the folder you want the backup files to save in.
10. Click **OK** to begin. The progress bar at the bottom of the window shows you the progress of the backup.




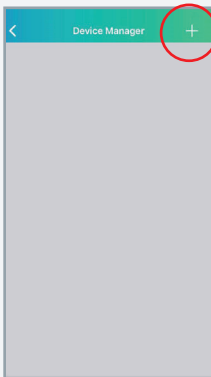
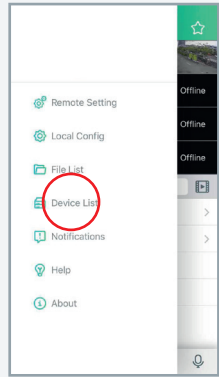
Please Note: Practice the playback and backup facility before an incident occurs.

Mobile : APP Connectivity

1. Search ESP View from Google Play Store for android devices or App Store or iOS devices and install.



- 2. Run the app to display the live view
- 3. Touch the  icon to open the menu.
- 4. Select 'Device List'

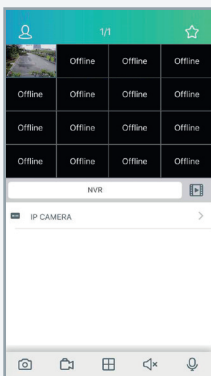
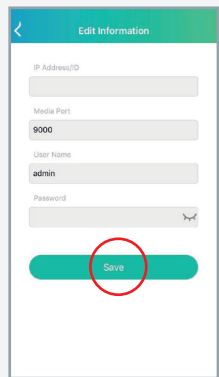


5. Select 'ADD' and scan the QR code located on the DVR.

QR Code



6. Enter the DVR's password and select 'Save'

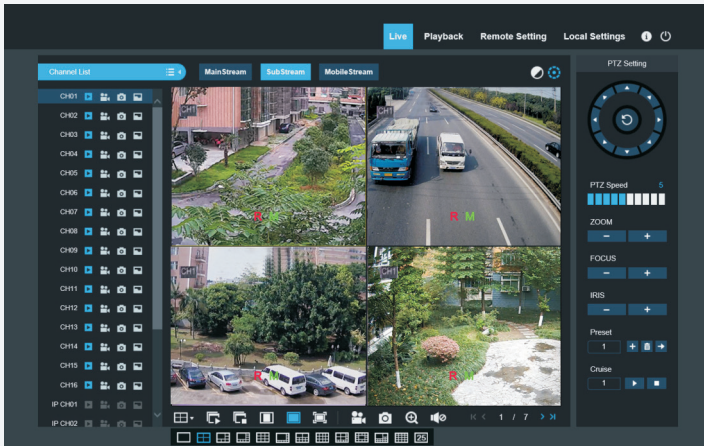


After all settings are completed the APP will turn to Live view display with camera images.

PC: Software Connectivity

The system can be accessed remotely via PC software.

To remotely access the DVR with the supplied software, please review the full product manual to insure PC settings and requirements are met.



Health & Safety

This unit must be installed by a suitably qualified person. Please ensure that all installations comply with the current IEE regulations. For reasons of space and clarity not every system has been included and the diagrams have been simplified. The product is not user serviceable. Do not dismantle this product.

Disclaimer

As with all software and hardware dependent devices, ESP are unable to guarantee that every device will be compatible with the supplied product and software. Specific models of phone, tablet or other devices, the hardware it contains, the service provider, the types of data services offered and variations in version numbers can affect the performance.

Due to our policy of continuous product improvement and development, the specifications in this guide may be subject to change without prior notice.

Notes

Notes



Elite Security Products
Unit 7, Target Park,
Shawbank Road, Lakeside,
Redditch B98 8YN



Telephone: 01527 51 51 50
Fax: 01527 51 51 43
Email: info@espuk.com
www.espuk.com

E&OE - Errors and omissions excepted. A21