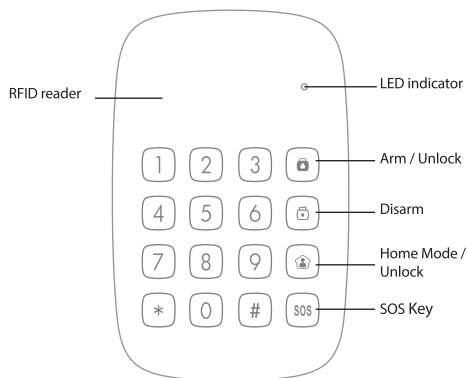
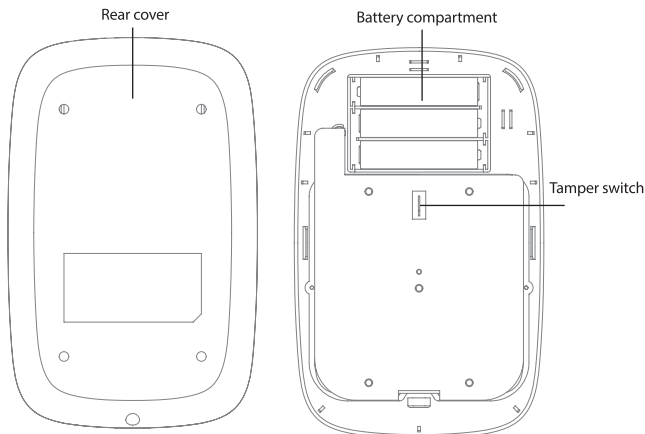




# Appearance

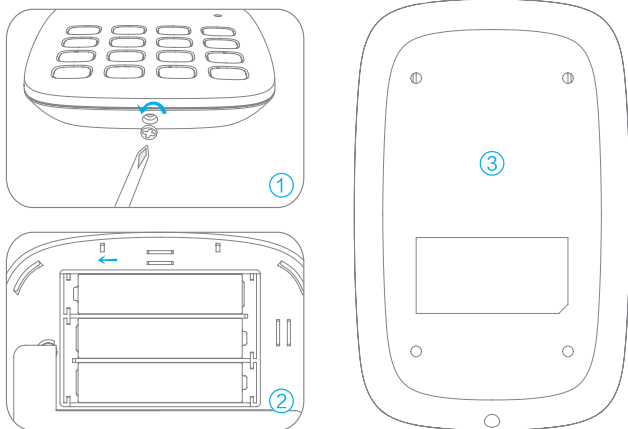


The keypad supports up to 50 RFID tags



## Preparation

The ECSPKY is powered by 3 AAA batteries. On first time use, remove the battery strip.



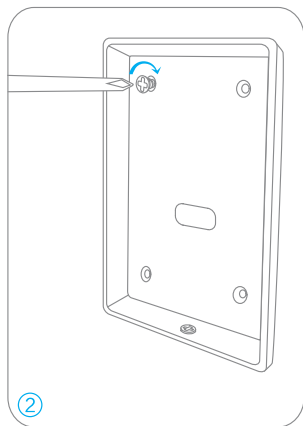
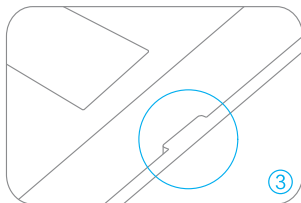
1. Unscrew and open the case
2. Insert the batteries according to the battery polarity
3. Close the case and secure with previously removed screw

### Note:

Because of the tamper switch, opening the rear cover of the keypad, when the system is armed will trigger the alarm. In such an instance, to stop the alarm, disarm the system.

# Installation

1. Unscrew the case and remove the rear cover.
2. Secure the rear cover to the desired surface, using the supplied screws.
3. Reinstall the main unit onto the installed rear cover, and (using the screw at the bottom) tighten them together.



## Note:

Because of the tamper switch, opening the rear cover of the keypad, when the system is armed will trigger the alarm. In such an instance, to stop the alarm, disarm the system.

## Setup

The ECSPKY operates in 4 different modes;

### Normal Mode

The LED indicator flashes once every 5 seconds

### Sleep Mode

Under Normal Mode, the keypad switches to Sleep Mode if no operation is made for 35 seconds. Press the Arm [🔒] or Home Mode [🏠] keys to exit Sleep Mode. When the keypad is in Sleep Mode, the LED indicator is off.

### RFID Reader Mode

Under Normal Mode, press [\*] on the keypad to activate the RFID reader for 10 seconds: The LED indicator turns on. After 10 seconds, the LED light turns off as the RFID reader turns off automatically.

### Setup Mode

To enter Setup Mode, switch to Normal Mode, and then enter [your admin code + #] on the keypad. The LED indicator flashes once every second. Press [\*] to exit the Setup Mode and switch to the Normal mode.

After 30 seconds without operation, the keypad goes back to Normal Mode.

Note; Default admin code: 123456

Correct operation: 1 bleep and the LED light flashes once.

Incorrect operation: 1 Bleep and the LED light blinks twice.

## Registering the ECSPKY to a Hub

Make sure the control panel is in Connection Mode

Press Arm [🔒] or Home Mode [🏠] on the keypad to unlock it.

Type your user code or admin code on the keypad, and then press any of the Arm [🔒], Disarm [🔓] or Home Mode [🏠] keys. You will hear a short beep if successful.

Default admin code: 123456

Default user code: 1234

The control panel of your alarm system can be controlled from a distance from the keypad, once it has been successfully registered.

## Registering RFID tags

1. Press Arm [🔒] or Home Mode [🏠] on the keypad to unlock it. Then type [admin code + "#"] to enter setup mode.

Default admin code: 123456

If you hear 2 beeps, the code you have entered is incorrect.

2. Type [41#]. You hear one beep and the LED indicator light sup: the keypad switches to Connection Mode.

3. Swipe the RFID tag in front of the RFID reader. You should hear one beep; the connection is successful.

If you hear two beeps, the RFID tag has already been added.

Press [\*] to exit Setup Mode.

To clear all registered tags, press either the Arm [🔒] or Home [🏠] keys on the keypad to unlock it, and then type [admin code + #42]. You will then hear one beep; the RFID tags have been deleted from the keypad

## Usage

The keypad can be used as a remote control. Your user code or your admin code will be required before arming or disarming the system, or switching to home Mode or Mute Mode.

### Arm the System

1. Press Arm [🔒] or Home Mode [🏠] on the keypad to unlock it
2. Type your user code or admin code.
3. Press the Arm key [🔒]. The LED indicator flashes once, the keypad beeps once and sends the arming signal to the system.

Default admin code: 123456

Default user code: 1234

### Disarming the system with the keypad

1. Press Arm [🔒] or Home Mode [🏠] on the keypad to unlock it.
2. Type your user code or admin code.
3. Press the Disarm button [🔓]; the LED indicator flashes once, the keypad beeps once, and sends the disarm signal to the system

Default admin code: 123456

Default user code: 1234

### Disarming by RFID Tag

1. Press Arm [🔒] or Home Mode [🏠] on the keypad to unlock it.
2. Press [\*] to activate the RFID reader for 10 seconds.
3. Within the next 10 seconds, swipe the RFID tag in front of the reader to disarm the system.

The RFID reader turns off when a tag is swiped in front of it, when the [\*] key is pressed again on the keypad, or after 10 seconds without operation.

## Home Mode

1. Press Arm [🔒] or Home Mode [🏠] on the keypad to unlock it
2. Type your user code or admin code.
3. Press the [🏠] key: The LED indicator will flash once, the keypad will beep once, and then send the Home Mode signal to the system.

## Emergency Call

Refer to page on how to lock/unlock the SOS button then:

### With the SOS button unlocked

1. Press Arm [🔒] or Home mode [🏠] on the keypad to unlock it.
2. Press [SOS].
3. The LED indicator flashes once, the keypad beeps once, and the alarm is triggered immediately.

### With the SOS button locked

1. Press Arm [🔒] or Home mode [🏠] on the keypad to unlock it.
2. Type your user code or admin code.
3. Press [SOS] to trigger the alarm immediately

## Low battery Indication

When the battery level is low, the LED indicator flashes 3 times every 5 seconds. In such an instance, please replace the batteries.



# Settings

## Enter Setup Mode

Press Arm [🔒] or Home Mode [🏠] on the keypad to unlock it.  
Type [admin code + #] to enter Setup mode.

Default admin code: 123456

Under setup mode, if no operation is made for 30 seconds, the keypad will exit the setup mode automatically. The setup mode can also be exited by pressing [\*].

## Exit delay

Detectors start detecting potential intrusions immediately after the system has been armed. To prevent alarms when you leave the property, an exit delay can be set up. If you have set up an exit delay, the control panel will receive the signal to arm the system when you press the Arm key [🔒] on the keypad after the time set.

1. Enter Setup Mode.
2. Type [33 + delay time in seconds + #].
3. You hear one bleep; the setup is successful.

To deactivate the Exit delay, set 0 as the delay time.

### Note:

The time is set in seconds, which ranges from 0 ~ 255 seconds, default setting 0

If the exit delay has been set, the control panel will bleep once every seconds after having pressed the Arm [🔒] key. The rhythm of the bleeps will speed up during the last 15 seconds. After the exit delay has elapsed, the control panel is armed.

If an exit delay has been set up for both the control panel and the keypad, the actual delay time will be the combination of both exit delays.

## Lock / Unlock the SOS button

### Lock the SOS button

1. Enter the Setup Mode.
2. Type [3410#].
3. You hear one bleep: the setup is successful.

If the SOS button is locked, you will need to press Arm [Ⓜ], or Home Mode [Ⓜ] to unlock the keypad, then type in either your admin code or user code, then press [SOS] to trigger the alarm.

### Unlock the SOS button

1. Enter Setup mode.
2. Type [3410#]
3. You hear one bleep; the setup is successful.

If the SOS button is locked, you will need to press Arm [Ⓜ] or Home Mode [Ⓜ] to unlock the keypad. Then type your admin or user code, and finally then press [SOS] to trigger the alarm.

**Note:**

Default setting: SOS button is locked.

## Keypress audible indication

The keys will beep when pressed, and this can be enabled or disabled. If the key indication has been disabled, the successful setup indications will also be disabled.

### Enabling Keypress Audible Indication

1. Enter Setup mode.
2. Type [3510#].
3. You hear one beep; the setup is successful.

### Disabling Keypress Audible Indication

1. Enter Setup mode.
2. Type [3511#].
3. You hear one beep; the setup is successful.

Note:

Default setting: Audible indication is enabled.

## Enable/Disable deactivation by RFID tag

### Enable deactivation of the system by RFID

1. Enter setup mode
2. Type [3610#]
3. You hear one bleep: the setup is successful

### Disable deactivation of the system by RFID

1. Enter setup mode.
2. Type [3611#]
3. You hear one bleep: the setup is successful

**Note:**

Default setting: Deactivation of the system VIA RFID tag is enabled.

## Changing Codes

### Change User Code

1. Enter setup mode
  2. Type [38+*new user code*+#]
  3. You hear one bleep: the setup is successful
- Note: The user code must be 4 digits. Default user code is "1234"

### Change Admin Code

1. Enter setup mode.
  2. Type [39+*new admin code*+#]
  3. You hear one bleep: the setup is successful
- Note: The admin code must be 6 digits. Default admin code is "123456"

### Reset

1. Enter setup mode.
  2. Type [987654321#]
  3. You hear one bleep: the setup is successful
- Note: After having reset the keypad, the user code, the admin code, and any other settings will be restored to default settings. Any programmed RFID tags will not be deleted.

## General

Our products are designed to comply with the recommended codes and practice, and is to be installed and serviced by competent persons in accordance with the relevant regulations.

## Guidance

>Smart alarm accessories are specified a maximum of 80meters line of sight in open air. For every obstacle the signal strength is reduced.

>Battery life depends on working and environmental factors

For more product information please visit the ESP website