

IP PTZ Camera Quick Start Guide



The latest product manual and software is available online:
https://www.espuk.com/technical_support/



Connection

Typically the IP Camera (IPC) will either be connected to an NVR or connected directly to a network via a router.

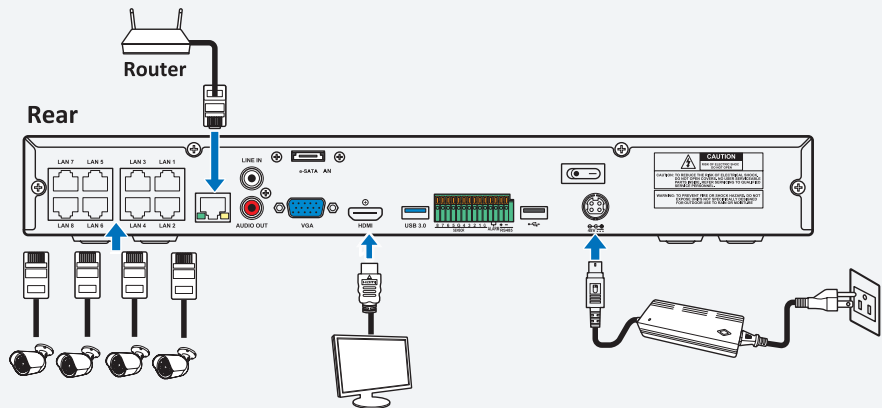
If the IPC is connected to an NVR, the IPC will need a temporary connection to a PC/Laptop to match the NVR's network segment details.

If the IPC is connected directly to a network there is a setup process required to match the network segment details.

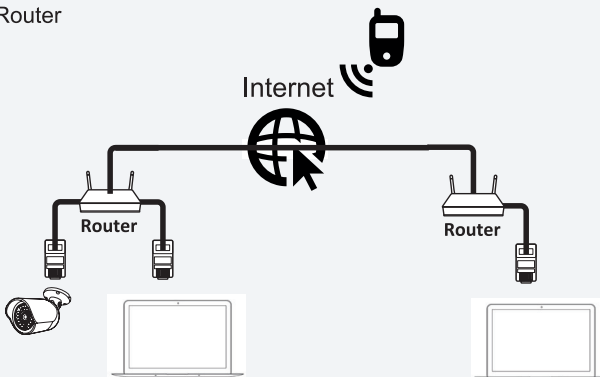
The quick start guide will assist, and the full manual will provide more support if required.

Example Connections

IPC with NVR



IPC with Router



Network Connection

After applying power and connecting the IPC to a PC/ Laptop;

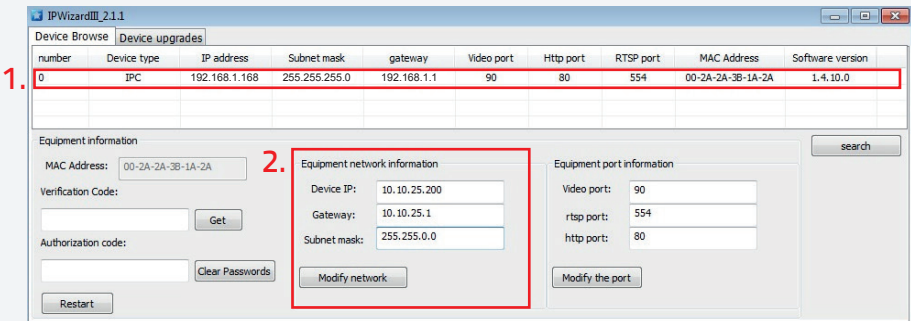
Load the supplied 'IP WIZARD' software onto a PC/ Laptop.

Launch the IP WIZARD software, and select 'Search', if the network's existing details match the IPC's default details the device will be recognised.

The default IP address of the IPC is : 192.168.1.168

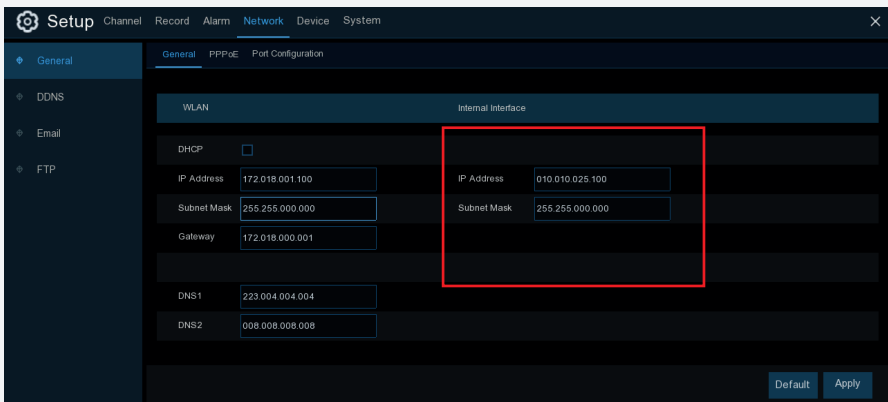
The default Subnet Mask of the IPC is : 255.255.255.0

1. Click on the IP address in the search bar to access the IPC.



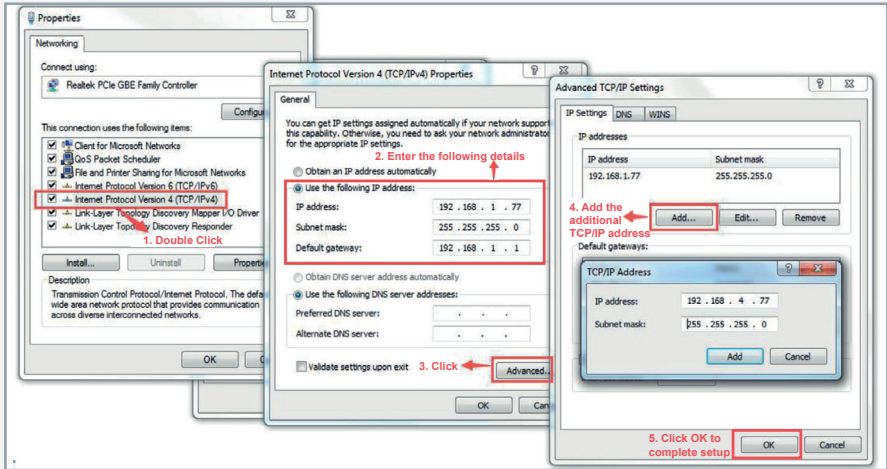
2. If required, the IPC's network information can be modified via the IP Wizard to match the intended network segment details.

For example; to use with an ESP NVR, view the NVR's internal interface menu and apply matching segment details:



If the IP Wizard software cannot find the IPC;

On the PC/Laptop, access 'Network Connections', then 'Properties' to access the following menus;



After the details have been applied and saved launch the Wizard IP software and 'Search'.

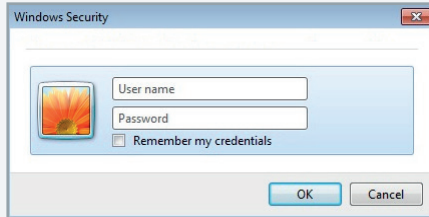
If the search is unsuccessful, review the full installation manual for the product or contact the IT administrator for further support.

Tip; Other network connections on the PC/Laptop may need to be temporarily disabled to complete IPC setup.

Internet Explorer Browser Access

Once the Device Search finds the IPC, the IP address link will open Internet Explorer.

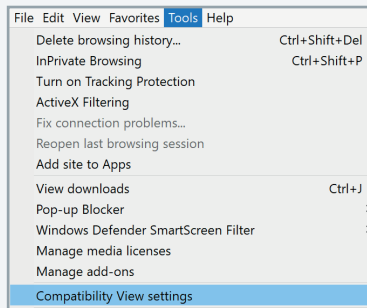
The default user name is **admin**, the default password is **admin**;



Run and Allow the latest plugin;



In the browser add the IPC's IP address in the Compatibility View menu:



Disclaimer

(i) As with all software and hardware dependent devices, ESP are unable to guarantee that every device will be compatible with the supplied product and software.

Specific models of phone, tablet or other devices, the hardware it contains, the service provider, the types of data services offered and variations in version numbers can affect the performance.

(ii) IP enabled devices should always be installed by competent /experienced persons.

Notes

Notes



Elite Security Products

Unit 7, Target Park,
Shawbank Road, Lakeside,
Redditch B98 8YN



Telephone: 01527 51 51 50

Fax: 01527 51 51 43

Email: info@espuk.com

www.espuk.com

E&OE - Errors and omissions excepted.119