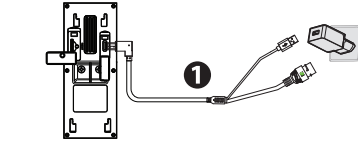
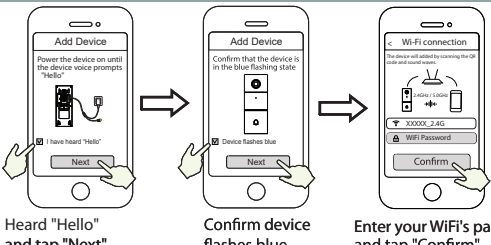
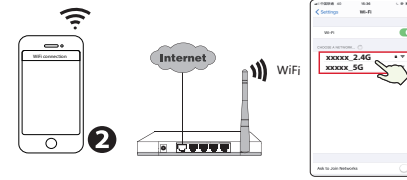


1. Plug the smaller end of the USB cable into the Type-C port on the back of the Video Doorbell, and the larger end into a USB wall charger such as your smartphone charger (DC5V 1.0A power output recommended for faster charging). Please wait for a few seconds until you hear "Ready for WiFi configuration".

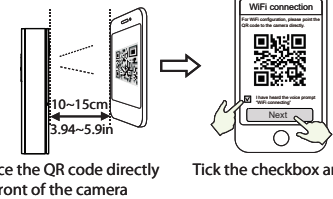


**⚠ Do not connect the doorbell to AC and Type-C power supply at the same time.**

**Tips:** If you didn't hear the voice prompt, press and hold reset for about 10 seconds to reset the camera.  
2. Make sure that your smart phone is connected to your WiFi router.

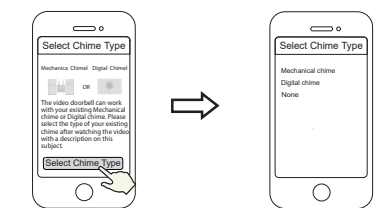


6. Please scan the QR code on the doorbell with the smartphone camera, then you will hear a voice prompt say "WiFi connecting". Select the checkbox and tap "Next".



**Tips:** Please place the QR code on the phone screen about 10 to 15cm (3.94 to 5.9in) away, and if you encounter difficulties you can try to move the screen slowly around 10 - 15cm (3.94 - 5.9in).

8. In "Select Chime Type", tap "Select Chime Type", and tap "Next". In "Select Chime Type", Select Chime Type and tap "Mechanical chime" or "Digital chime" or "None" (Please select the type of your existing chime).



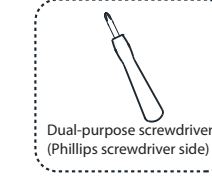
**Note:** Please carefully confirm the existing chime type in your home. If the chime type is selected incorrectly, the transformer and chime at home will be damaged, causing the doorbell and chime to not work properly. Generally, a mechanical chime refers to the ringing sound made by striking a metal with a metal striker, while digital chime refers to the ringing sound made by playing music through a speaker. If you are still not sure, please watch the chime type description video carefully, or consult our customer service staff.

**Note:**  
1. Make sure you have installed the ESP Smart 2K App, and have scanned the doorbell QR code and completed the "add device" process in the app before beginning the hardware installation process.  
2. If you choose to use AC power to power the video doorbell, you need to ensure that the specification of the transformer in your home is **8V~24V AC**, the minimum power requirement is **8VA**.  
3. If you use DC power to power the video doorbell, you need to prepare a **DC12V~30V** power adapter, the minimum power requirement is **6W**.  
4. If you use Type-C interface to power the video doorbell, you need to prepare a **DC5/1A** power adapter, the minimum power requirement is **5W**.

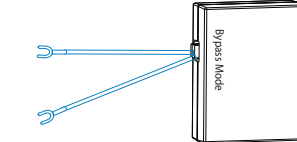
**Step 1**  
Ring the existing doorbell, make sure it's working and locate the place of your existing chimes in the house.

**Step 3**  
There are typically two types of indoor chime: mechanical, or digital. If you need to use the existing mechanical chime or digital chime in your home, please install the Power Kit in parallel to the chime. Power Kit is generally used to solve the problem of abnormal ringing of the chime after the video doorbell replaces the traditional doorbell buttons. How to distinguish between Digital Chime and mechanical Chime, please scan the following QR code to view.

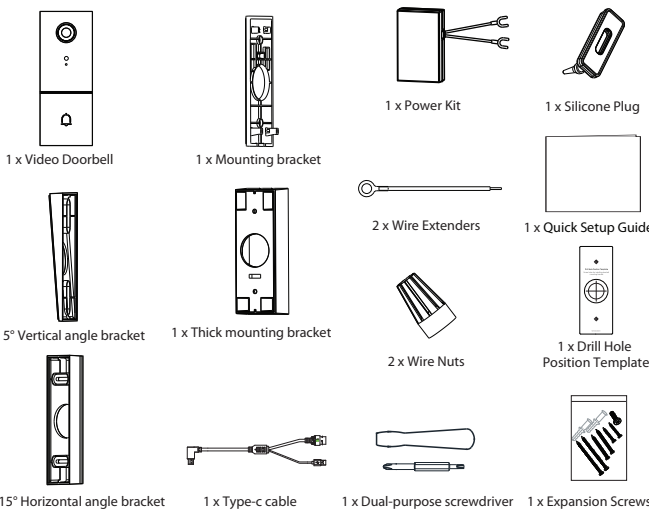
What's required: Dual-purpose screwdriver



**Bypass Model:** If you don't want to use the existing chime, you can switch the cable on the Power kit to the bypass interface, and then connect it in parallel to the existing chime. This will short-circuit the chime in your home. If you choose to use the Power Kit bypass mode, be sure to set the chime type to "None" in your APP to avoid damaging the transformer.

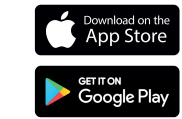


You can scan the QR code below to search and watch the power kit installation video.



Add device: Connection VIA the ESP Smart 2K app

It is strongly recommended that you complete the "add devices" process on the ESP Smart 2K app before the doorbell hardware is installed. **Before You Get Started** Go onto your relevant app store and install the ESP Smart 2K App, and learn how to add the doorbell to the APP.

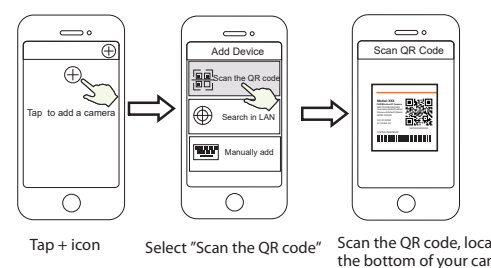


To ensure a smoother video experience on your smart phone, it is recommended that your smart phone meet the following specifications:  
● iOS: version 11 or higher.  
● Android: 4.1 or higher, using a device with a Graphics Processing Unit (GPU).  
**Note:** For the best experience, please update the APP to the latest version

**Tips:** The camera supports dual-band 2.4GHz and 5 GHz WiFi networks, so you can choose the channel with the stronger signal to use. For example, choose your SSID: XXXXX\_2.4G or XXXXX\_5G.

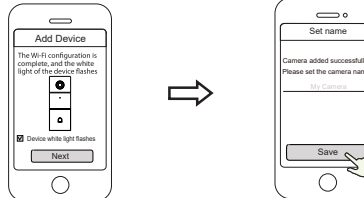
3. Open the ESP Smart 2K APP and please sign up for an account, or sign in if you have one already.

4. After logging into your account, select "Tap to add a camera" or "+" icon on the upper right corner, then select "Scan the QR code" and scan the QR code that labelled at the bottom of your camera

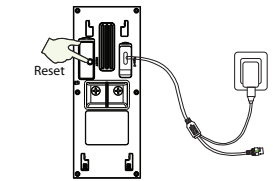


In "Add Device", if you hear "Hello", select the checkbox and tap "Next", continue to confirm that the device is in the blue flashing state, and tap "next". In "WiFi connection", enter your WiFi password and tap "Confirm" (see illustrations on the next page).

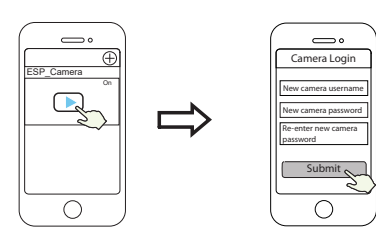
7. Wait a few seconds until the camera notifies you that the "Wireless connection succeeded" which means your camera has connected to your WiFi successfully. After, you can set the camera name and tap "Save" in "Set name" interface.



**Note:** If the process of adding a camera fails, please reset your camera and try adding again according to the above method.



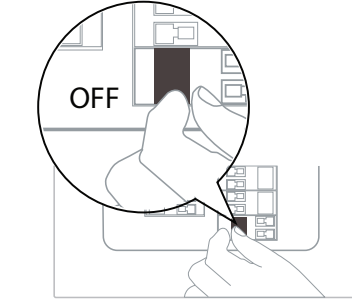
9. Tapping on the play button in the video box will jump to the "Camera Login" setting interface. For your security, please set a new username and password for your camera before viewing live video.



10. After completing the above steps, you can begin installing your camera.

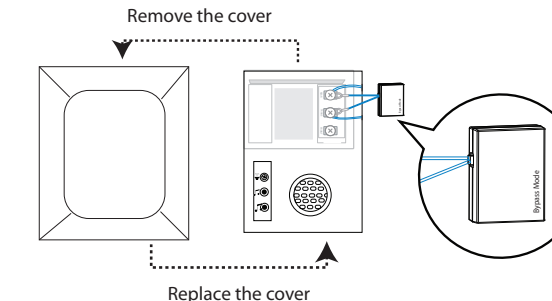
**Note:** As with all network devices, it is recommended that a unique password is set, and that it is changed often for security purposes.

**Step 2**  
Shut off the master circuit breaker in your house. Turn the lights in your home on / off to make sure the electricity in your house is properly shut off.



**⚠** If you're not comfortable doing it yourself, consult a qualified electrician.

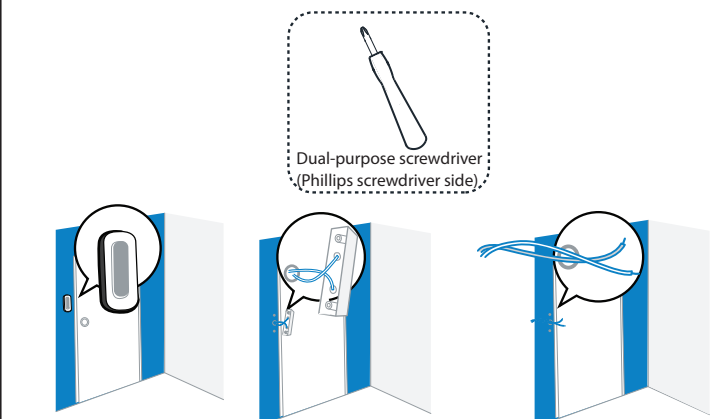
After removing the cover of the mechanical chime or digital chime, use the wire connection terminal with the Power Kit as pictured. After wiring is completed, replace the cover.



The Amazon Alexa Dot can be used as a chime, using the "smart Control" menu, in conjunction with the Alexa app, using the "Cloud IPC" skill.

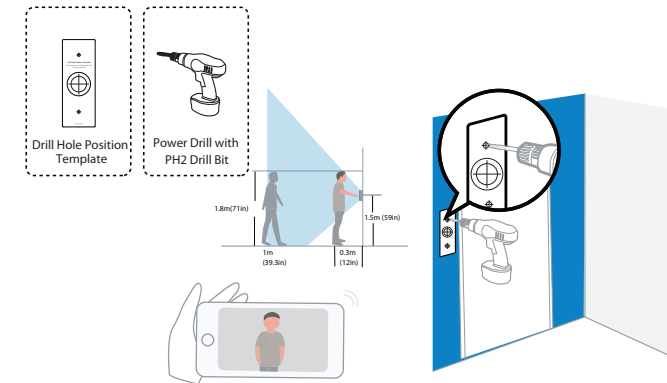
**Step 4**  
Remove the existing doorbell button near the front door. Pull the two wires out carefully when removing the old doorbell. Straighten the wire ends if necessary.

What's required: Dual-purpose screwdriver



## Video Doorbell Installation

**Step 5**  
Determine the mounting position of the doorbell. First check if you can reuse the existing holes in the wall. Use the drill hole position template to mark the screw holes in the area where the existing doorbell button was located. Place the drill hole position template at least 1.5m (59") high from the ground to ensure that the height of the installed doorbell will be suitable, and then drill the holes (use PH2 drill bit).

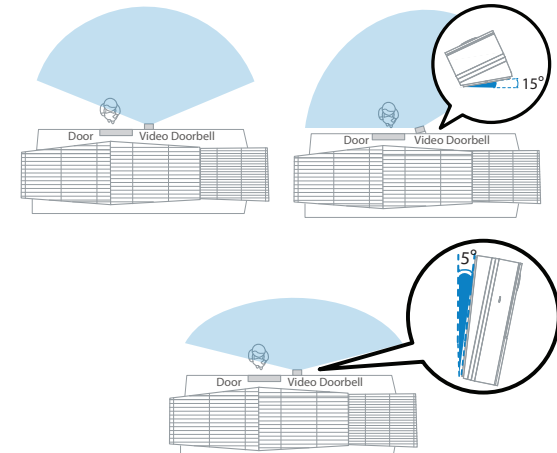


www.espuk.com

16

## Video Doorbell Installation

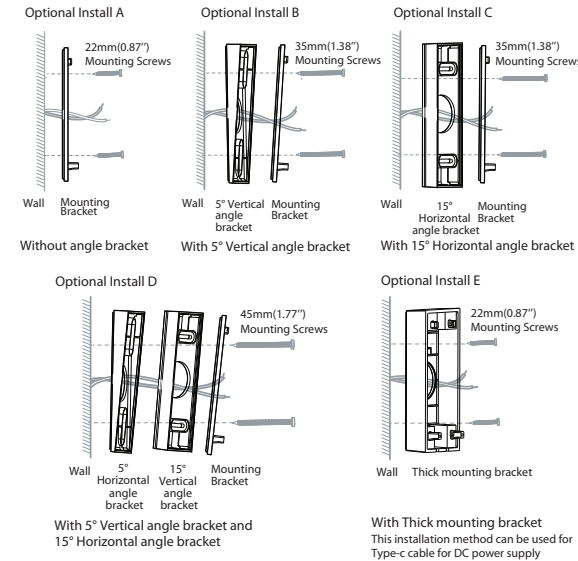
**Step 7**  
Optional: Use the 15° mounting bracket or 5° mounting bracket as a supplementary mounting bracket if you wish to adjust the doorbell camera's field of view to cover more of one side.



www.espuk.com

18

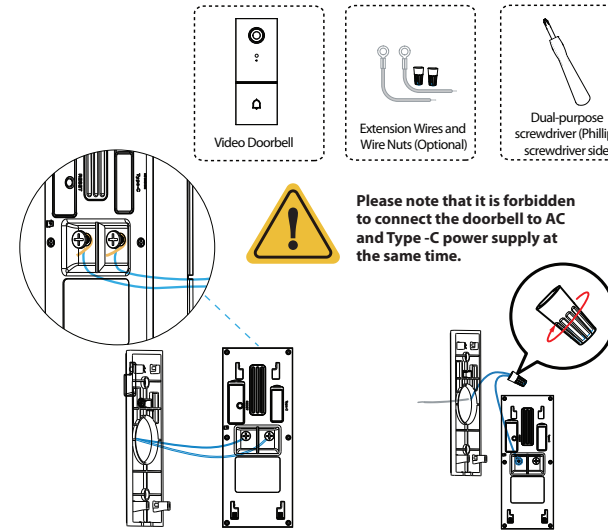
## Video Doorbell Installation



www.espuk.com

20

## Video Doorbell Installation

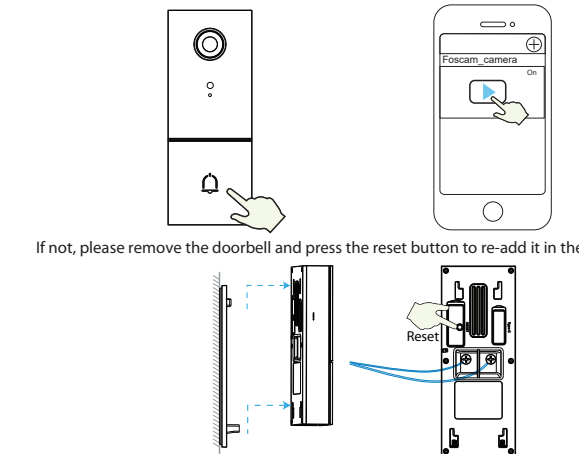


www.espuk.com

22

## Video Doorbell Installation

**Step 12**  
Press the doorbell to test the chime connection. Did your doorbell chime? If yes, it's working! If no, check that wires are secure. Open the foscam APP again and check if you can view live video.



www.espuk.com

24

## Other ways to access your Doorbell

### VMSLive

VMSLive is a software packaging for PC's. It does not require plug-ins, and is compatible with Windows and Mac, supporting all ESP Smart 2K cameras; and up to 36 cameras at the same time. If you would like to manage multiple cameras, it is advised to use this software. You can download the software package at [https://www.espuk.com/technical\\_support/product\\_software/](https://www.espuk.com/technical_support/product_software/)

### Add the Device

1. Run VMSLive, then create a local administrator account and login.
2. Tap the "+" icon on the VMSLive and follow the setup wizard to add your camera.

www.espuk.com

26

## Important Notice

WLAN frequency range: 2412MHz - 2472MHz and 5725MHz - 5850MHz  
Maximum transmission power (2.4GHz) : < 19dBm  
Maximum transmission power (5GHz): < 14dBm  
Wireless Standard: IEEE802.11b/g/n (2.4GHz)  
IEEE802.11a/n/ac (5GHz)

Further product information can be found on [www.espuk.com](http://www.espuk.com)



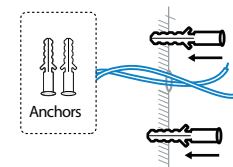
www.espuk.com

www.espuk.com

28

## Video Doorbell Installation

**Step 6**  
Use the provided wall anchors if installing in materials such as stucco, brick, or concrete. If installing into a wooden doorframe, there is no need to use the wall anchors.

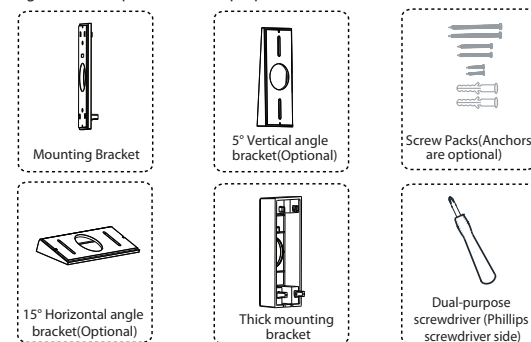


www.espuk.com

17

## Video Doorbell Installation

**Step 8**  
Lead the two existing doorbell wires through the central square hole on the bracket before you start mounting.  
Insert the two provided screws through the screw holes, or through the 5° Vertical angle bracket / 15° Horizontal angle bracket / Thick mounting bracket, (install the mounting bracket to the 5° Vertical angle bracket / 15° Horizontal angle bracket), and fasten the screws tightly.  
**What is required:** Mounting Bracket / Screw Packs / 5° Vertical angle bracket(Optional) / 15° Horizontal angle bracket (optional) / Dual-purpose screwdriver



www.espuk.com

19

## Video Doorbell Installation

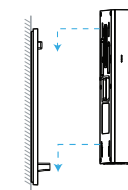
**Step 9**  
Connect the wires to the two terminals at the back of the doorbell, then tighten the terminal screws. Wire can connect to any terminal as the electric current is alternating current.  
Note: To prevent short-circuit, make sure the wires are not touching each other after connecting them to the terminals. If the wires are too short, use the extension wires and wire nuts provided to make them longer. Use electrical wiring tape to secure the connection if the wall doesn't have space for wire nuts.  
**What are required:** Extension Wires and Wire Nuts (Optional) / Video doorbell / Philips-Head Screwdriver

www.espuk.com

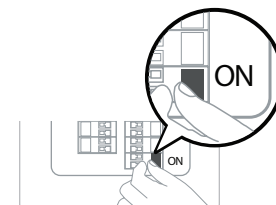
21

## Video Doorbell Installation

**Step 10**  
Hook the doorbell on top of the mounting bracket and then snap the doorbell bottom to the bracket. You may hear a "click" sound.



**Step 11**  
Switch the master circuit breaker in your house back to ON.

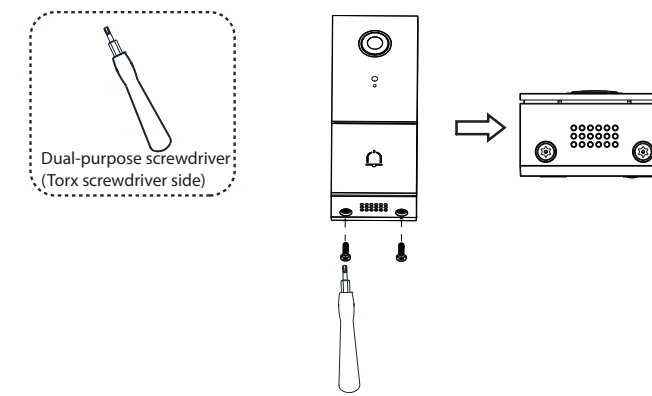


www.espuk.com

23

## Video Doorbell Installation

**Step 13**  
Use the included screwdriver to tighten the anti-theft screw.  
What's required: Dual-purpose screwdriver



www.espuk.com

25

## Important Notice

### Doorbell Username & Password

The doorbell username & password are used to access and manage your doorbell. Having a strong password can significantly improve the security of your doorbell.  
If you have forgotten either of them, please press the "Reset" button and hold it for more than 10 seconds while the doorbell is powered on. After hearing the voice prompt, release the button. The doorbell will automatically reboot and the default settings will be restored.  
You can then reconnect the camera by following this Quick Setup Guide.

### ESP Smart 2K Cloud Service Account Username & Password

Your ESP Smart 2K Cloud service account and password may be used to access both the ESP Smart 2K App and the ESP Smart 2K Cloud service website. Therefore, you can register your account username & password on either one.

www.espuk.com

27



A Scalmore GROUP  
Company

Elite Security Products LTD,  
Unit 7 Target Park, Shawbank Road,  
Lakeside, Redditch, B98 8YN, United Kingdom

T: +44 (0)1527 515150 | F: +44 (0)1527 515143  
E: info@espuk.com | W: espuk.com



www.espuk.com