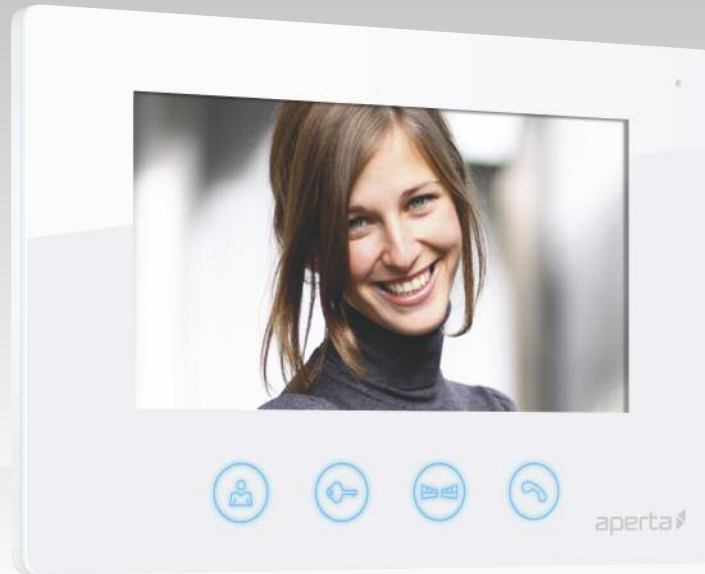


aperta

APMON | COLOUR VIDEO DOOR ENTRY MONITOR



USER MANUAL



[www.espuk.com](http://www.espuk.com)



## Contents

Monitor Functions .....	4
Installation .....	5
Dipswitch Settings .....	6
Monitor Operations .....	7

## System Cabling

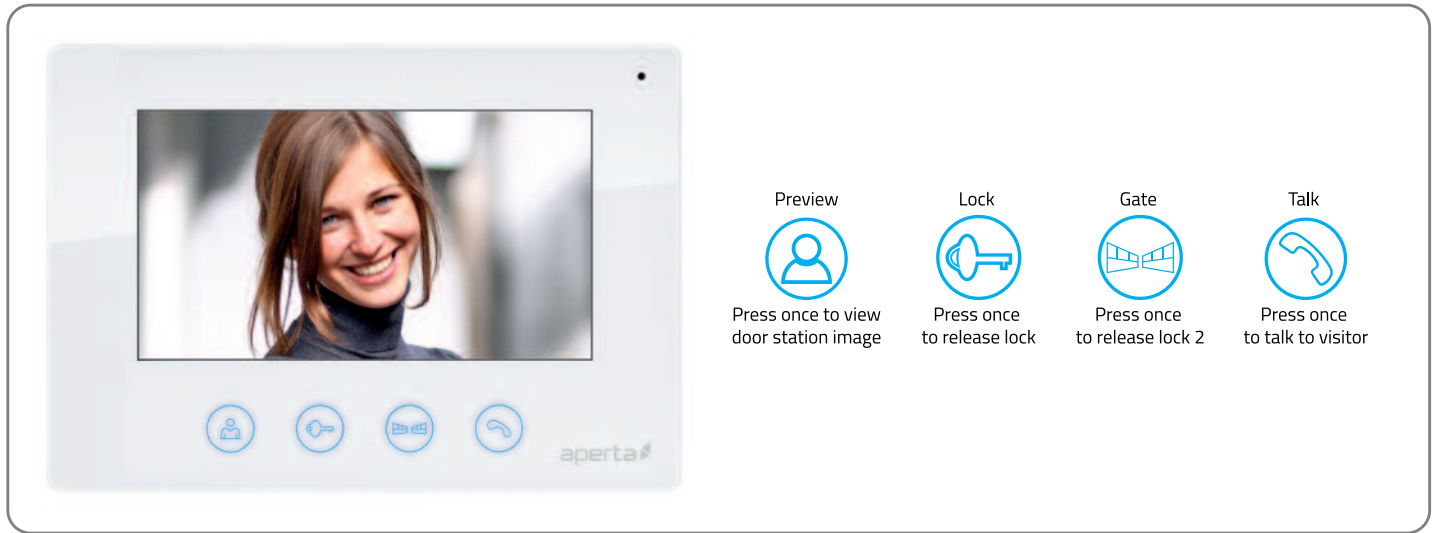
All system cabling (excluding mains 240vAC supply) has been tested with Cat5E UTP PVC cable.



Part Number - A8NFORCE5EUTP

Find this product online:  
[elandcables.com](http://elandcables.com) | Cables & Accessories | LAN Cable | Cat 5E UTP PVC Cable

# Monitor Functions



A



B



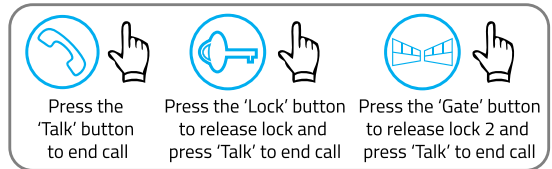
C



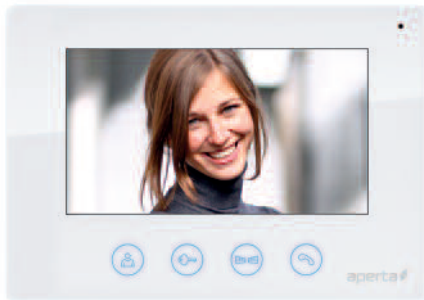
D



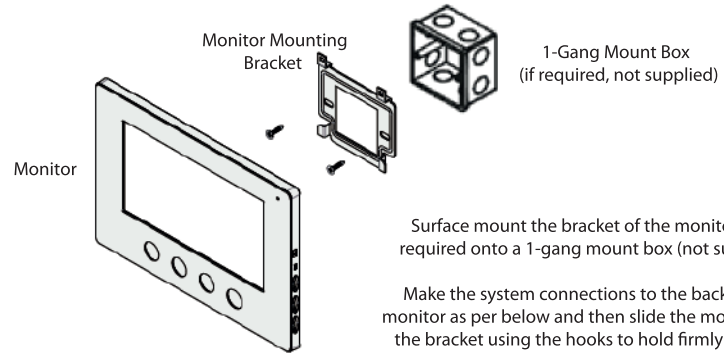
Then choose between these 3 options



# Installation



Site the indoor monitor to suit application.



Surface mount the bracket of the monitor or if required onto a 1-gang mount box (not supplied).

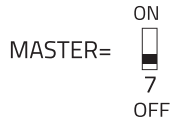
Make the system connections to the back of the monitor as per below and then slide the monitor onto the bracket using the hooks to hold firmly in place.

Rear View of Monitor

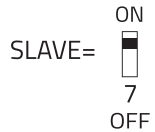


# Dipswitch Settings

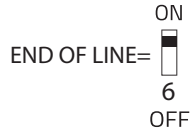
- 1 To set the monitor to 'MASTER' position dip switch 7 to be set to OFF



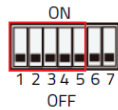
- 2 To set the monitor to 'SLAVE' position dip switch 7 to be set to ON



- 3 To set monitor as 'End of line' position dip switch 6 to be set ON



- 4 To set monitor's ID address for apartment system adjust dip switch 1-5 using reference table



Dipswitch Settings 1-5	Address ID of Monitor	Dipswitch Settings 1-5	Address ID of Monitor	Dipswitch Settings 1-5	Address ID of Monitor
	01		12		23
	02		13		24
	03		14		25
	04		15		26
	05		16		27
	06		17		28
	07		18		29
	08		19		30
	09		20		31
	10		21		32
	11		22		

# Monitor Operations



Chime Volume: Slide switch for High, Medium and Low setting

Chime Selection: Press button to select chime melody

Monitor Brightness: Adjustment for brightness levels

Monitor Chroma: Adjustment for the intensity of colour

Talking Volume: Adjust the volume level of the monitor

Inner Call – Calling another monitor on the system or within same apartment



In standby mode



Press and hold the "Talk" button for 5 seconds



All system monitors will ring



Once one Monitor has "Talk" button pressed the inner call can begin

CE

Elite Security Products  
Unit 7, Target Park, Shawbank Rd  
Lakeside, Redditch B98 8YN



Telephone: 01527 51 51 50  
Fax: 01527 51 51 43  
email: [info@espuk.com](mailto:info@espuk.com)

E&OE - Errors and omissions excepted. D17

[www.espuk.com](http://www.espuk.com)