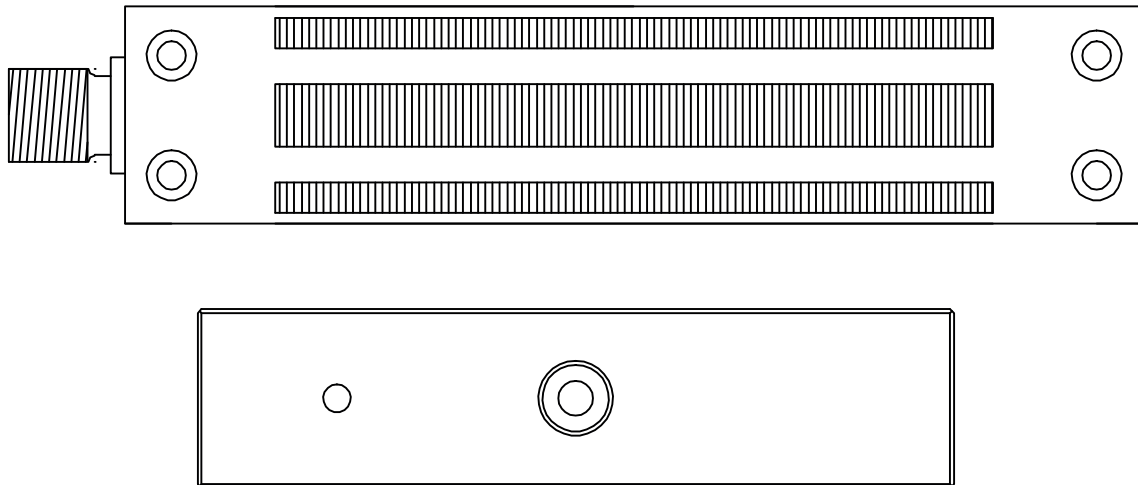


# A1ML300XT Manual

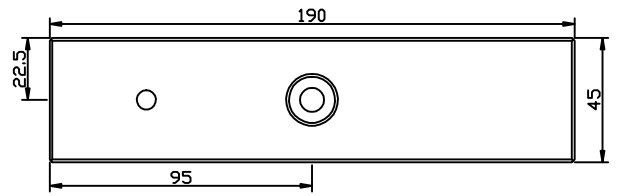
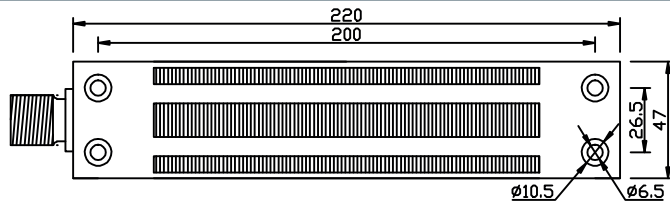
Aperta External IP68  
300kg Holding Force Magnetic Lock  
c/w Z & L Bracket



The latest product manuals and software is available online:  
[https://www.espuk.com/technical\\_support](https://www.espuk.com/technical_support)

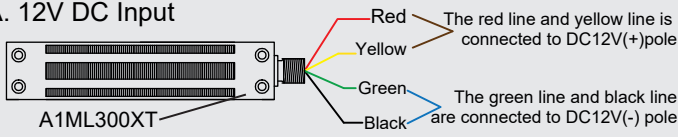


## Dimensions

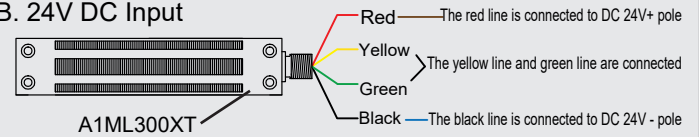


## Installation

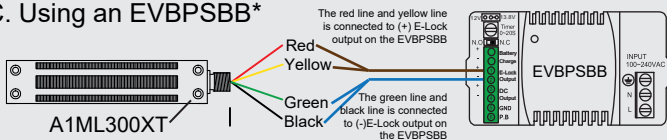
### A. 12V DC Input



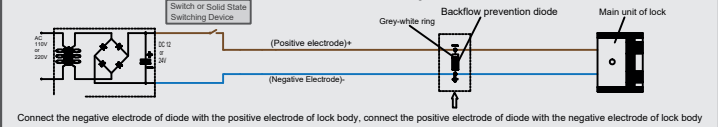
### B. 24V DC Input



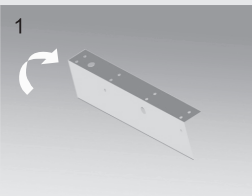
### C. Using an EVBPSBB\*



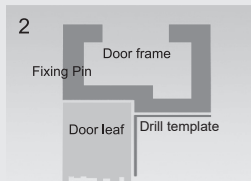
### D. Connection method of backflow prevention diode:



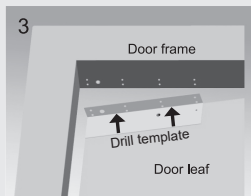
## Optional Bracket Installation



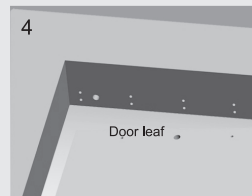
1 Fold the drill template to 90°



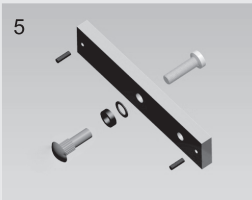
2 After close the door, put the drill template close to the top side of the door frame



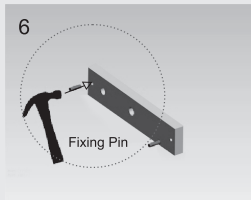
3 Mark screw positions on the door frame



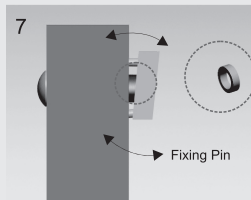
4 Drill holes according to your marked positions



5 Make a combination based on the picture



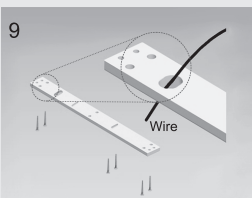
6 Knock the pin into the plate gently to avoid the plate moving.



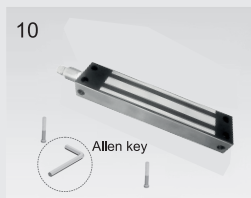
7 Rubber gasket makes the plate can be adjustable slightly and ensure the lock body and plate can be combined tightly to reach max holding force.



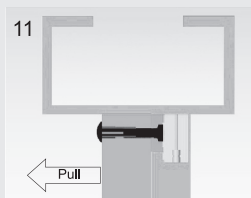
8 Remove the mounting plate from the lock body.



9 Fix the plate to the screw position which you marked before.



10 Fix the lock body to the mounting plate by Allen key



11 Open the door to test the holding force. Adjust the gap between plate and Magnetic lock surface by tighten the plate or Increase & decrease the rubber gasket.

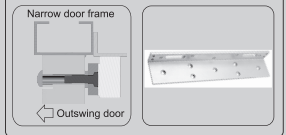


12 Tighten the tamper screw after making sure all installation steps are correct and work well.

### Optional bracket installation

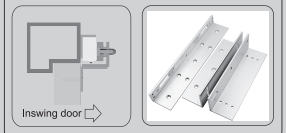
#### L bracket

When the door frame is narrow, L bracket is needed.



#### ZL bracket

For inward opening door, ZL bracket is needed.



## Notice

- When installing the armature plate, please do not tighten the screws too tightly, and allow the rubber gasket to have proper elasticity, so that the armature plate can automatically align itself to the correct position and magnetise with the magnet.
- The magnetic lock uses the principle of generating magnetic flux from an energizing coil. Therefore the heating of the magnetic coil is normal, and is normal at 45°C (± 10%)
- Any wiring terminations should be completed in an suitably ingress protected box.
- \*EVBPSBB sold separately, optional diode not included



Elite Security Products UK, Unit 7 Target Park, Shawbank Road, Lakeside, Redditch, Worcestershire, B98 8YN  
 Tel: +44(0) 1527 51 51 50 Fax: +44(0) 1527 15 01 43 Email: info@espuk.com  
 Registered in England, Company Registration Number: 02769392, VAT Registration: GB614686525

For more product information please visit [www.espuk.com](http://www.espuk.com)  
 E&OE - Errors and Omissions Excepted. I22

