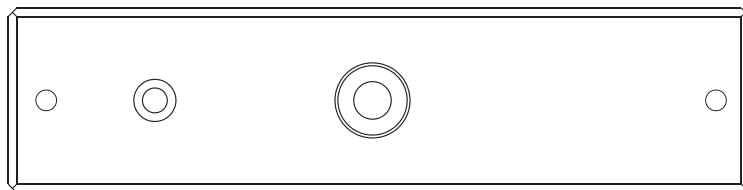
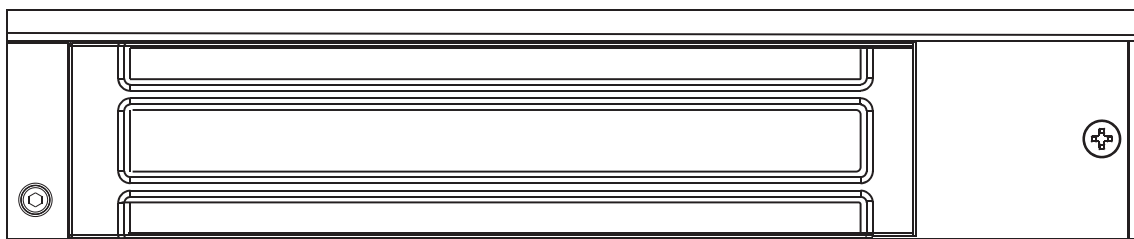


# A1ML250 Manual

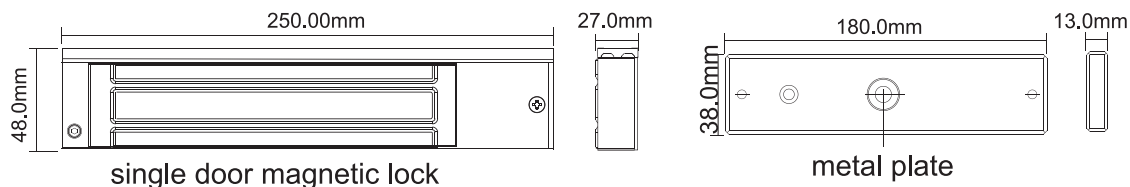
Aperta Internal IP20  
250kg Holding Force Magnetic Lock  
with Lock Status LED & Contact c/w Z & L Bracket



The latest product manuals and software is available online:  
[https://www.espuke.com/technical\\_support](https://www.espuke.com/technical_support)



## Dimensions



single door magnetic lock

metal plate

## Installation

1  
Fold the drill template to 90°

2  
After close the door, put the drill template close to the top side of the door frame

3  
Mark screw positions on the door frame

4  
Drill holes according to your marked positions

5  
Make a combination based on the picture

6  
Knock the pin into the plate gently to avoid the plate moving.

7  
Rubber gasket makes the plate can be adjustable slightly and ensure the lock body and plate can be combined tightly to reach max holding force.

8  
Remove the mounting plate from the lock body.

9  
Fix the plate to the screw position which you marked before.

10  
Fix the lock body to the mounting plate by Allen key

11  
Open the door to test the holding force. Adjust the gap between plate and Magnetic lock surface by tighten the plate or Increase & decrease the rubber gasket.

12  
Tighten the tamper screw after making sure all installation steps are correct and work well.

### Optional bracket installation

**L bracket**  
When the door frame is narrow, L bracket is needed.

**ZL bracket**  
For inward opening door, ZL bracket is needed.

## Connections

Red & Green Indicator for lock status:  
Power on & pull in place: Red LED  
Power on & Lock is open: Green LED

12/24V DC connector, connect to lock body to change input voltage

Hall Interface:  
When the "Hall Interface" is connected and then detects the lock is pulling in the armature, the relay is triggered and the NC & NO outputs are switched.

### Optional connection method of backflow prevention diode:

Connection method of back flow prevention diode:  
A: Connect the negative electrode of diode with the positive electrode of lock body  
B: Connect the positive electrode of diode with the negative electrode of lock body

### Using an EVBPSBB\*

+ on the Maglock is connected to (+)E-Lock output on the EVBPSBB

GND on the Maglock is connected to (+)E-Lock output on the EVBPSBB

## Notice

- When installing the armature plate, please do not tighten the screws too tightly and allow the rubber gasket to have proper elasticity, so that the armature plate can automatically align itself to the correct position and magnetise with the magnet.
- The magnetic lock uses the principle of generating magnetic flux from an energizing coil. Therefore the heating of the magnetic coil is normal, and is normal at 45°C (± 10%)
- \*EVBPSBB sold separately, (optional) diode not included

## Contact Details



Elite Security Products UK, Unit 7 Target Park, Shawbank Road, Lakeside, Redditch, Worcestershire, B98 8YN  
Tel: +44(0) 1527 51 51 50 Fax: +44(0) 1527 15 01 43 Email: info@espuk.com  
Registered in England, Company Registration Number: 02769392, VAT Registration: GB614686525

For more product information please visit [www.espuk.com](http://www.espuk.com)  
E&OE - Errors and Omissions Excepted. 122